

M70(NTSC) SERVICE MANUAL




MODEL 14DN2NYD

1、	Caution
2、	Specification
3、	BOM list
4、	Alignment Procedure
5、	Block Diagram
6、	Schematic Diagram
7、	PCB Layout
8、	Explode View Diagram

This manual is the latest at the time of printing, and does not include the modification which may be made after the printing, by the constant improvement of product.

1. Cautions

When working, the unit is with ultra high voltage about 21.8KV inside. So, to avoid the risk of electric shock, be careful to adjust the chassis!

1. Only qualified personnel should perform service procedures.
2. All specification must be met over line voltage ranger of 120V AC 60Hz.
3. Do not operate in WET/DAMP conditions.
4. Portions of the power supply board are hot ground. The remaining boards are cold ground.
5. Discharge of CRT anode should be done only to CRT ground strap.
6. When fuse blow, ensure to replace a fuse with the same type and specification.
7. Keep the wires away from the components with high temperature or high voltage.
8. When replacing the resister with high power, keep it over the PCB about 10mm.
9. The CRT anode high voltage has been adjusted and set in the factory. When repairing the chassis, do not make the high voltage exceed 24.0KV (The beam current is 0uA). Generally, the high voltage is set on $21.8KV \pm 1.5KV$ (The beam current is 500uA).
* The values of parameters above are for information only.
10. Before return the fixed unit, do check all the covering of wires to ensure that not fold or not short with any metal components. Check the entire protection units, such as control knobs, rear cabinet & front panel, insulation resister & capacitor, mechanical insulators and so on.
11. There are some mechanical and electrical parts associating with safety (EMC) features (Generally related to high voltage or high temperature or electric shock), these features cannot be found out from the outside. When replace these components, perhaps the voltage and power suit the requirements, but efficient X-ray protection may not be provided. All these components are marked with  in the schematic diagram. When replace these, you'd better look up the components listed in this manual. If the component you replaced not has the same safety (EMC) performance, harmful X-ray may be produced.

2.Specification

<p>Date: 21/Mar/05' Rev.:29/Mar/05, Rev2: 25/May/05</p>	<p style="text-align: center;">Product: @(disney)--Pooh</p>
<p>ProductView.....: Approved by.....:KK San</p>	
<p>Specs / Products</p>	
<p>MasterData Customer Id Version Status Brand EAN UPC</p>	<p>"Winnie Pooh"--14"CTV(US 13"CTV) US Market DISNEY t.b.d t.b.d</p>
<p>Reception +Tuning - presets/channels +Tuning - technology +Tuning - Indication +Freq Bands +Channels +IF Freq +TV Systems Off Air/Cable +Add Systems Ext In +TV Systems Multi +Sound Systems</p>	<p>181 CHs, Full-Cable PLL OSD VHF:2~13; UHF:14~69; Full CATV:2~13,A~W,W+1~W+84,A-5~A-1,5A; 181 45.5 MHz NTSC-M NTSC No AV STEREO (EXT AUDIO INPUT ONLY) Not guarantee AV stereo sound effect.</p>
<p>Picture - Processing +Scan +Scan Modes +Wide Screen Switching +Combfiler +Picture Control +Pict Enhancement +Pict Noise Reduction</p>	<p>Standard 4:3 no 1 H for NTSC Brightness, Color, Contrast, Tint, Sharpness n/a n/a</p>
<p>Picture - Display +Display Type +Screen Format +Size(Visual)" - size/vis. cm +Deflection System (CRT only) +Tube Technology (CRT only) +CRT Defl +CRT Gun +CRT Magn field +Resolution +Coating (only for D.V. sets) +White Temperature</p>	<p>CRT - FSQ 4:3 14(13V) - 37/33.54cm 1 Fh Black Matrix, Iron 090 degr Stand Gun +450 degrees (UK) >300 lines (TV test card) n/a 9300k or t.b.c</p>
<p>Sound +Leaflet Power +RMS Power Intern +RMS Power Extern +Surround Sound +Sound Features +Sound Control</p>	<p>2x1.0W n/a no Mute, AV STEREO Volume</p>
<p>Sound - Speakers +Speaker configuration +Speakers used +Speakers Power rating +Speaker Size</p>	<p>2 Normal Range >2X1.5W</p>
<p>User Interface +Interface Name +Voice Control +Menu +Menu Colours +Menu Languages +Menu Languages(default) +Special Features +Operational Features +PP Features +Tuning/Install Features +Clock/Timer Functions +Local Controls Front +Local Controls Top +Indicators - screen +Indicators - front</p>	<p>UI-SOEM-DU1 Disney cartoon Icon w/motion Disney Icon w/High light Control Multi-color (minimum 7 color per character/total 64 colors) English,French,Spanish, English Child lock, TV guardian (1st version:no, 2nd version: t.b.c.,running change to be confirmed) Picture/sound/tuning,TV/AV, child lock, Normal picture/sound Auto Channel Prog, Manual tuning, CH edit(add/delete) Sleep timer (90min) menu, Volume+/-, ch+/-, AV/TV, n/a OSD w/Cartoon Icon No</p>

TTE Overseas Support Department

+Numb of Loc Cont (incl Mains)	6+1(power sw)
+Number of Ind. (incl Mains)	0
+Local Controls (Old)	Channel +-, Vol +-, Menu, TV/Video
Remote Control	
+Remote Control - scope	
+Remote Control - type	t.b.c
+Remote Control - features	CH digit, CH+/-, picture/sound ctl, TV/AV, Child lock, timer,tuning,mute,OSD call, preference
Connectors Rear	
+Scart RGB+Y/C+CVBS	n/a
+Scart RGB+CVBS	n/a
+Scart CVBS	n/a
+Scart CVBS+Y/C	n/a
+Component In (Y/U/V) Cinch	n/a
+In Y/C+Cinch(CVBS+St)	n/a
+In Y/C+Cinch(CVBS+Mo)	n/a
+In Y/C+Cinch(St)	n/a
+In BNC (CVBS)	no
+In Cinch(CVBS+Mo)	no
+In Cinch(CVBS+St)	1x (video,R,L)
+Out Cinch(CVBS+St)	no
+Out Cinch(CVBS+Mo)	no
+Out Cinch Audio Stereo	no
+Out Cinch Audio Mono	no
+Out Cinch Dolby Surround	no
+Out Cinch Subwoofer	no
+Dig Audio Out	no
+Loudspeakers	no
+Control Busses	n/a
+Feature Slot	n/a
+ITV Smart Port	n/a
+Terr. Antenna in	75 Ohms (F type)
Guide + IR Blaster Jack	n/a
Connectors Front	
+In Y/C + Cinch(CVBS+St)	n/a
+In Y/C + Cinch Stereo	n/a
+In Cinch (CVBS + St)	Ext(x1: video,R,L)
+In Cinch (CVBS+Mo)	no
+Headphone Out	Mini-Jack 3.5mm
+Feature Slot	n/a
Connectors Side	
+In Y/C + Cinch(CVBS+St)	no
+In Y/C + Cinch Stereo	no
+In Cinch (CVBS + St)	no
+In Cinch (CVBS + Mo)	no
+Headphone Out	no
Connectors Top	
+In Cinch (CVBS + St)	
+Headphone Out	
+Out Cinch (St)	1 pair for detachable speaker of "Pooh"
Styling	
+Cabinet Name	Disney--Pooh
+Configuration	main set w/Pooh head + color TV shoe
+Graphics/Logo's	"Disney"--color printing
+Cabinet Colour and Finish	t.b.c
+Mechanics	FC: main tooling w/tooling module 1 for 3 frent keys BC: main tooling w/tooling modulle 2 for Jacks
+Speaker Visibility	no

TTE Overseas Support Department

General	
+Segment	14DU01
+Chassis	MTDU1(Micronas+Toshiba)
+Software Delivery Mode	Flash-->mask
+Software Version	MTDU1
+Mains Voltage	120V+/-20%
+Mains Frequency	60Hz
+Type Mains Cord	USA
Power Consumption (P)TV in On	50W
Power Consumption SB in Watts	n/a
Power Consumption Semi SB in W	<5 W
+Power in "ON" for	n/a
+Power in Standby for	n/a
+Power in "OFF" for	n/a
+INDICATION on BACKCOVER	Rating labe: Model no./Voltage rating/UL,FCC mark, Warning (caution)
+INDICATION on set	warning label for detachable speakers/ Disney customer service number/Serial No./UPC bar code/Made in ?/
+Channel	n/a
Miscellaneous	
+EAN Indication	yes
+Approbation	FCC Part 15 sub B, FCC/FDA (USA), for power cord(lead free, EPA3050B)
+Tests	
+Local Integration	no
Various Perf. Param.	
+Service Call-Rate	t.b.c
PIP/POP	n/a
+Type	n/a
+Features	n/a
Digital Reception	n/a
+Transmission	n/a
Built-in Data System	
+Text Standard	CCD(Close Caption Decode) w/V-chip
+(Tele)text Features	CCD: Off,C1,C2,T1,T2; V-chip: TV rating ,MPAA rating
+Nbr bckgrnd page / Mem Size	no
+Text Technology	no
+Digital Data handling	no
+Program Guide	no
Built-in real Clock/Timer	no
+Type	n/a
+Features	n/a
Built-in Radio	no
+Type	
Built-in PC display	no
+PC Synch	
+PC Control	
Built-in Media Slots	no
+Type of Medium	
+Type of Deck	
+Version of Deck	

TTE Overseas Support Department

Final Equipment +Packaging - methods +Documents and manuals +IB/WC Languages +IB/WC SIZE +Cables Supplied +Antenna Supplied +Band and screw Supplied +Aux Equipm Supplied Packaging - width cm Packaging - height cm Packaging - depth cm Weight (P)TV (incl. Packaging) Container loading(40' HQ) Mgt Location Factory Mode	Carton/ polyfoam/ plastic bag IB+WC(paper 190Lb) IB:English, Spanish, French; WC: English,French Draft IB and WC provided by Memorex co, referring to Orion IB/WC no no yes, one band and one screw. R/C unit w/o battery(AAAX2) t.b.c (for reference of Princess:493 mm) t.b.c (for reference of Princess:465 mm) t.b.c (for reference of Princess:423 mm) t.b.c t.b.c (for reference of Princess:640 sets) China refer to TCL styling
Drafted by KK San	Approved by Memorex: Rander Li TCL S-OEM: KK San Date: April 1,2005

TTE Overseas Support Department

3.BOM List

Item No.	Description	qty	BOM text	Remark
T8-EDN2AY-MANSM	ASS"Y - MAIN BOARD	1		
T8-EDN2AY-CRY	CRT BD	1		
10-1N4148-ABX	DIODE 1N4148 (SWITCHING)	1	D501	
10-1N4148-ABX	DIODE 1N4148 (SWITCHING)	1	D502	
11-SC2482-0BX	TRANSISTOR 2SC2482	1	Q503	
11-SC2482-0BX	TRANSISTOR 2SC2482	1	Q502	
11-SC2482-0BX	TRANSISTOR 2SC2482	1	Q501	
11-SA1015-YBX	TRANSISTOR ST2SA1015Y (PNP)	1	Q510	
18-FE0272-JNX	RES. M.O. 2.7K OHM 1/2W +/-5%	1	R518	
18-FE0272-JNX	RES. M.O. 2.7K OHM 1/2W +/-5%	1	R515	
18-FE0272-JNX	RES. M.O. 2.7K OHM 1/2W +/-5%	1	R514	
18-FG0153-JHX	RES. M.O. 15K OHM 2W +/-5%	1	R512	
18-FG0153-JHX	RES. M.O. 15K OHM 2W +/-5%	1	R511	
18-FG0153-JHX	RES. M.O. 15K OHM 2W +/-5%	1	R510	
18-CB0101-JNX	RES. C.F. 100 OHM 1/6W +/-5%	1	R507	
18-CB0101-JNX	RES. C.F. 100 OHM 1/6W +/-5%	1	R501	
18-CB0101-JNX	RES. C.F. 100 OHM 1/6W +/-5%	1	R504	
18-CB0102-JNX	RES. C.F. 1K OHM 1/6W +/-5%	1	R522	
18-CB0272-JNX	RES. C.F. 2.7K OHM 1/6W +/-5%	1	R524	
18-CB0681-JNX	RES. C.F. 680 OHM 1/6W +/-5%	1	R527	
18-CB0681-JNX	RES. C.F. 680 OHM 1/6W +/-5%	1	R526	
18-CB0681-JNX	RES. C.F. 680 OHM 1/6W +/-5%	1	R525	
18-CB0472-JNX	CARBON RES. C.F. 4.7K OHM 1/6W +/-5%	1	R502	
18-CB0472-JNX	CARBON RES. C.F. 4.7K OHM 1/6W +/-5%	1	R505	
18-CB0472-JNX	CARBON RES. C.F. 4.7K OHM 1/6W +/-5%	1	R508	
18-CB0681-JNX	RES. C.F. 680 OHM 1/6W +/-5%	1	R523	
18-CB0751-JNX	RES. C.F. 750 OHM 1/6W +/-5%	1	R503	
18-CB0751-JNX	RES. C.F. 750 OHM 1/6W +/-5%	1	R509	
18-CB0751-JNX	RES. C.F. 750 OHM 1/6W +/-5%	1	R506	
25-BCB221-M1X	CAP. ELEC 220 UF 16V +/-20%	1	C508	
26-AMK102-KRX	CAP. CER 1000 PF 2KV +/-10% R	1	C505	
26-EBP103-ZFX	CAP. CER 0.01UF 50V +80/-20% F	1	C507	
26-EBP331-JCX	CAP. CER 330PF 50V +/-5% CH	1	C503	

TTE Overseas Support Department

26-EBP221-JCX	CAP. CER 220PF 50V +/-5% CH	1	C502	
26-EBP331-JCX	CAP. CER 330PF 50V +/-5% CH	1	C501	
40-M70002-CRB1X	P.C.B. CRT BD	1		
46-10967W-01X	PIN BASE *1 TJC1-1A	1	P531	
46-35179W-04X	PIN BASE TJC3-4A	1	P502	
46-33079W-05X	PIN BASE *5 TJC3-5A	1	P501	
47-CRT009-CX0	SOCKET CRT 12P GZS12-4-2	1	S501	
26-EBP103-ZF1	CAP CER 50V 2.5MM 10KpF -20%+80%	1	C515	
41-WJ0075-B00	WIRE BARE JUMPER 7.5MM	1	J503	
41-WJ0150-B00	WIRE BARE JUMPER 15MM	1	J505	
34-R569K2-1BX	COIL CHOKE 5.6 UH +/-10%	1	L501	
18-CE0100-JNX	RES. C.F. 10 OHM 1/2W +/-10%	1	R530	
18-CD0152-JNX	RES. C.F. 1.5K OHM 1/4W +/-5%	1	R529	
25-BLA479-M1X	CAP. ELEC 4.7 UF 250V +/-20%	1	C510	
10-0FR104-FBX	DIODE FR104 (FAST RECTIFIER)	1	D503	
35-139730-00X	FERR. BEAD BF60	1		L505 FOR C515
35-139730-00X	FERR. BEAD BF60	1		L506 FOR C515
18-CD0105-JNX	RES. C.F. 1M OHM 1/4W +/-5%	1	R528	
T8-EDN2AY-FAY	FRONT AV	1		
40-M70001-SIE1X	P.C.B SIDE AV BD	1		
46-CD050T-06J01	HS 6PIN	1	P955	
41-WJ0125-B00	WIRE BARE JUMPER 12.5MM	1	J951	
47-RCA178-XX0	RCA SOCKET AV-3.2-3LK15	1	P958	
T8-EDN2AY-KEY	KEY BD	1		
02-IRR001-XX1	IR RECEIVER MODULE HRM380017	1	IR001	
18-DB0363-FNX	RES.M.F 36K OHM 1/6W +/-1%	1	R087	
18-DB0363-FNX	RES.M.F 36K OHM 1/6W +/-1%	1	R083	
18-DB0392-FNX	RES.M.F 3.9K 1/6W+/-1%	1	R085	
18-DB0392-FNX	RES.M.F 3.9K 1/6W+/-1%	1	R081	
18-CB0470-JNX	RES. C.F. 47 OHM 1/6W +/-5%	1	R088	
18-DB0822-FNX	RES. M.F. 8.2K OHM 1/6W +/-1%	1	R086	
18-DB0822-FNX	RES. M.F. 8.2K OHM 1/6W +/-1%	1	R082	
25-HCB470-M1X	CAP. ELEC 47 UF 16V +/-20%	1	C080	
40-M70001-KEE1X	P.C.B KEY BD	1		

TTE Overseas Support Department

46-35148H-02X	HS 2P24 200 TJC3-2Y/SCN-2Y	1	P003	
46-CD025T-07J02	HS 7PIN	1	P002A	
48-TAC001-XX0	TACT SWITCH	1	S002	
48-TAC001-XX0	TACT SWITCH	1	S006	
48-TAC001-XX0	TACT SWITCH	1	S005	
48-TAC001-XX0	TACT SWITCH	1	S004	
48-TAC001-XX0	TACT SWITCH	1	S003	
48-TAC001-XX0	TACT SWITCH	1	S001	
18-CB0563-JNX	RES. C.F. 56K OHM 1/6W +/-5%	1	R091	
T8-EDN2AY-MANHM	CHASSIS ASSEMBLY	1		
T8-EDN2AY-AMY	AMP. BD	1		
09-BAS316-ATX	SMD.DIODE BAS316 115	1	D603	
09-BAS316-ATX	SMD.DIODE BAS316 115	1	D601	
13-AN7523-N0S	IC AN7523N	1	IC601	
18-EE0228-JS2	RES. FUS. 0.22 OHM 1/2W +/-5%	1	R620	
19-AB0000-JTX	RES SMD 0 OHM 1/10W +/-5% 0603	1	N605	
19-AB0000-JTX	RES SMD 0 OHM 1/10W +/-5% 0603	1	J604	
19-AB0000-JTX	RES SMD 0 OHM 1/10W +/-5% 0603	1	J607	
19-AB0000-JTX	RES SMD 0 OHM 1/10W +/-5% 0603	1	J608	
19-AB0000-JTX	RES SMD 0 OHM 1/10W +/-5% 0603	1	J609	
19-AB0000-JTX	RES SMD 0 OHM 1/10W +/-5% 0603	1	J610	
19-AB0000-JTX	RES SMD 0 OHM 1/10W +/-5% 0603	1	J611	
19-AB0000-JTX	RES SMD 0 OHM 1/10W +/-5% 0603	1	J614	
19-AB0000-JTX	RES SMD 0 OHM 1/10W +/-5% 0603	1	J615	
19-AB0000-JTX	RES SMD 0 OHM 1/10W +/-5% 0603	1	J616	
19-AB0000-JTX	RES SMD 0 OHM 1/10W +/-5% 0603	1	J617	
19-AB0000-JTX	RES SMD 0 OHM 1/10W +/-5% 0603	1	J601	
19-AB0224-JTX	SMD RES 220K OHM 1/10W 0603	1	R609	
19-AB0103-JTX	RES SMD 10K OHM 1/10W 0603	1	R611	
19-AB0392-JTX	SMD. RES 3.9K OHM 1/10W +/-5%	1	R603	
19-AB0393-JTX	SMD. RES 39K OHM 1/10W +/-5%	1	R601	
19-AB0472-JTX	RES SMD 4.7K OHM 1/10W 0603	1	R604	
19-AB0103-JTX	RES SMD 10K OHM 1/10W 0603	1	R612	
19-AB0822-JTX	SMD. RES 8.2K OHM 1/10W +/-5% 0603	1	R606	

TTE Overseas Support Department

25-BCB100-M1X	CAP. ELEC 10 UF 16V +/-20%	1	C603	
25-BCB100-M1X	CAP. ELEC 10 UF 16V +/-20%	1	C606	
25-BDA471-M1X	CAP. ELEC 470 UF 25V +/-20%	1	C604	
25-BDB220-M1X	CAP. ELEC 22 UF 25V +/-20%	1	C617	
27-MBC474-J0X	CAP. M.P.E 0.47UF 63V +/-5%	1	C605	
28-AB0104-KBX	SMD. CAP 50VDC 0.1UF +/-10% 06	1	C610	
28-AB0821-JCX	CAP.SMD 820PF 50V +/-5% 0603	1	C607A	
41-WJ0075-B00	WIRE BARE JUMPER 7.5MM	1	J612	
41-WJ0075-B00	WIRE BARE JUMPER 7.5MM	1	J605	
41-WJ0125-B00	WIRE BARE JUMPER 12.5MM	1	J603	
41-WJ0150-B00	WIRE BARE JUMPER 15MM	1	J602	
41-WJ0200-B00	WIRE BARE JUMPER 20MM	1	J606	
46-33079W-02X	PIN BASE *2 TJC3-2A	1	P602	
46-33079W-03X	PIN BASE *3 TJC3-3A	1	P601	
46-33079W-05X	PIN BASE *5 TJC3-5A	1	P603	
46-DD015T-02J01	HS 2PIN	1	P604 TO P806	
67-H43126-0A0	HEAT SINK	1		FOR IC601
28-AB0472-KBX	CAP.SMD 4700PF 50V +/-10% 0603	1	C607	FOR IC601
19-AB0000-JTX	RES SMD 0 OHM 1/10W +/-5% 0603	1	N601	FOR T402
19-AB0000-JTX	RES SMD 0 OHM 1/10W +/-5% 0603	1	N606	FOR Q402
63-B30080-AB4G	S/T SCREW B 3 X 8 AB	1		FOR IC301
T8-EDN2AY-HPY	HEADPHONE	1		FOR Q402
18-CB0271-JNX	RES. C.F. 270 OHM 1/6W +/-5%	1	R952	FOR IC301
18-CB0271-JNX	RES. C.F. 270 OHM 1/6W +/-5%	1	R951	FOR IC301
25-HCB100-M1X	CAP. ELEC 10 UF 16V +/-20%	1	C953	FOR DEGAUSSING COIL
25-HCB100-M1X	CAP. ELEC 10 UF 16V +/-20%	1	C954	
26-EBP471-JCX	CAP. CER 470PF 50V +/-5% CH	1	C951	
26-EBP471-JCX	CAP. CER 470PF 50V +/-5% CH	1	C952	
46-CD032T-05J02	HS UL2468#24 L=320MM	1	P956	
47-EAR014-XX0	EARPHONE SOCKET CK3-3.5-7LK-A	1	P957	
41-WJ0075-B00	WIRE BARE JUMPER 7.5MM	1	N951	
41-WJ0075-B00	WIRE BARE JUMPER 7.5MM	1	N952	
41-WJ0075-B00	WIRE BARE JUMPER 7.5MM	1	N953	
T8-EDN2AY-HZY	HORIZON. BD	1		

TTE Overseas Support Department

09-38C3V9-DTX	SMD.DIODE BZX384-C3V9 115	1	D304	
09-38C2V4-DTX	SMD.DIODE 2.4V	1	D307	
09-BAS316-ATX	SMD.DIODE BAS316 115	1	D306	
09-BAS316-ATX	SMD.DIODE BAS316 115	1	D302	
09-BAS316-ATX	SMD.DIODE BAS316 115	1	D305	
09-BAS316-ATX	SMD.DIODE BAS316 115	1	D404	
09-BAS316-ATX	SMD.DIODE BAS316 115	1	D303	
10-0FR104-FBX	DIODE FR104 (FAST RECTIFIER)	1	D401	
10-0FR104-FBX	DIODE FR104 (FAST RECTIFIER)	1	D402	
10-1N4001-EBX	DIODE 1N4001 (RECTIFIER)	1	D410	
41-WJ0125-B00	WIRE BARE JUMPER 12.5MM	1	D409	
10-1N4001-EBX	DIODE 1N4001 (RECTIFIER)	1	D301	
10-1N4002-EBX	DIODE 1N4002 (RECTIFIER)	1	D403	
10-79C8V2-DBX	DIODE ZENER 8V2 1/2W 5%	1	D407	
11-SC2235-YAX	TRANSISTOR 2SC2235-Y(NPN)	1	Q401	
11-SC5885-0AX	TRANSISTOR 2SC5885	1	Q402	
13-STV930-2BS	IC STV9302B	1	IC301	
18-DB0822-FNX	RES. M.F. 8.2K OHM 1/6W +/-1%	1	R303	
18-CD0102-JNX	RES. C.F. 1K OHM 1/4W +/-5%	1	R405	
18-CD0122-JNX	RES. C.F. 1.2K OHM 1/4W +/-5%	1	R311	
18-CB0223-JNX	RES. C.F. 22K OHM 1/6W +/-5%	1	R417	
18-CD0223-JNX	RES. C.F. 22K OHM 1/4W +/-5%	1	R406	
18-CE0109-JNX	RES. C.F. 1 OHM 1/2W +/-5%	1	R304	
18-CD0101-JAX	RES.C.F 100OHM 1/4W +/-5%	1	R409	
18-CE0682-JNX	RES. C.F. 6.8K OHM 1/2W +/-5%	1	R424	
18-CE0682-JNX	RES. C.F. 6.8K OHM 1/2W +/-5%	1	R423	
18-CE0682-JNX	RES. C.F. 6.8K OHM 1/2W +/-5%	1	R422	
18-CE0682-JNX	RES. C.F. 6.8K OHM 1/2W +/-5%	1	R421	
18-EE0478-JS2	RES.FUSE 0.47 OHM 1/2W +/-5%	1	R410	
18-EE0109-JNX	RES. FUS. 1 OHM 1/2W +/-5%	1	R404	
18-EE0109-JS2	RES. FUS. 1 OHM 1/2W +/-5%	1	R418	
18-EE0109-JS2	RES. FUS. 1 OHM 1/2W +/-5%	1	R415	
18-EF0109-JGX	RES. FUS. 1 OHM 1W +/-5% (LS)	1	R408	
18-CE0103-JNX	RES. C.F. 10K OHM 1/2W +/-5%	1	R413	

TTE Overseas Support Department

18-FG0122-JAX	RES. M.O.F 1.2K OHM 2W +/-5%	1	R414	
18-FF0221-JAX	RES. M.O. 220 OHM 1W +/-5%	1	R336	
18-CE0330-JAX	RES.C.F 33 OHM 1/2W +/-5%	1	R412	
18-RF0109-JAX	RES.C.C. 1W 1OHM +/-5%	1	R301	
18-DF0159-FAX1	RES. M.F.1W 1.5 OHM/+/-1%	1	R309	
19-AB0000-JTX	RES SMD 0 OHM 1/10W +/-5% 0603	1	J309	
19-AB0000-JTX	RES SMD 0 OHM 1/10W +/-5% 0603	1	J310	
19-AB0000-JTX	RES SMD 0 OHM 1/10W +/-5% 0603	1	J308	
19-AB0000-JTX	RES SMD 0 OHM 1/10W +/-5% 0603	1	J307	
19-AB0000-JTX	RES SMD 0 OHM 1/10W +/-5% 0603	1	J403	
19-AB0000-JTX	RES SMD 0 OHM 1/10W +/-5% 0603	1	J311	
19-AB0000-JTX	RES SMD 0 OHM 1/10W +/-5% 0603	1	J312	
19-AB0000-JTX	RES SMD 0 OHM 1/10W +/-5% 0603	1	J313	
19-AB0102-JTX	RES SMD 1K OHM 1/10W 0603	1	R416	
19-AB0272-FTX	SMD. RES 2.7K OHM 1/10W +/-1%	1	R302	
19-AB0104-FTX	0603 RES. SMD 100K OHM 1/16W +/-1%	1	R306	
19-AB0000-JTX	RES SMD 0 OHM 1/10W +/-5% 0603	1	R305	
19-AB0103-JTX	RES SMD 10K OHM 1/10W 0603	1	R407	
19-AB0221-JTX	RES SMD 220 OHM 1/10W 0603	1	R401	
19-AB0683-FTX	SMD.RES 68K OHM 1/10W +/-1%	1	R308	
19-AB0821-JTX	SMD. RES 820 OHM 1/10W +/-5% 0603	1	R307	
25-BCB100-M1X	CAP. ELEC 10 UF 16V +/-20%	1	C311	
25-BFB479-M1X	CAP. ELEC 4.7 UF 50V +/-20%	1	C304	
25-BEA471-M1X	CAP. ELEC 470 UF 35V +/-20%	1	C413	
25-BEA102-M1X	CAP. ELEC 1000 UF 35V +/-20%	1	C308	
25-BEA221-M1X	CAP. ELEC 220 UF 35V +/-20%	1	C302	
25-BEA471-M1X	CAP. ELEC 470 UF 35V +/-20%	1	C301	
25-BFB479-M1X	CAP. ELEC 4.7 UF 50V +/-20%	1	C310	
25-BFB479-M1X	CAP. ELEC 4.7 UF 50V +/-20%	1	C431	
25-BFB479-M1X	CAP. ELEC 4.7 UF 50V +/-20%	1	C405	
25-BJA100-M1X	CAP. ELEC 10 UF 160V +/-20%	1	C416	
25-BLA100-M1X	CAP. ELEC 10 UF 250V +/-20%	1	C408	
25-MFB109-K1X	CAP.ELEC 1UF 50V +/-10%	1	C307	
25-GJA470-M1X	CAP ELEC 47UF 160V +/-20% 105	1	C411	

TTE Overseas Support Department

26-AIC391-KBX	CAP. CER 390 PF 500V +/-10% B	1	C412	
26-AIC391-KBX	CAP. CER 390 PF 500V +/-10% B	1	C409	
26-AMK331-KRX	CAP. CER 330 PF 2KV +/-10%	1	C402	
26-ABC102-KBX	CAP. CER 1000 PF 50V +/-10% B	1	C401	
26-ABC563-ZFX	CAP. CER 56NF 50V +80/-20%	1	C407	
27-AGQ394-JSX	CAP. M.PP 0.39 UF 250VAC +/-5%	1	C415	
27-ALR103-J0X	CAP. M.PP 0.01 UF 1.6KV +/-5%	1	C424	
27-PBC104-J0X	CAP. P.E 0.1UF 63V +/-5%	1	C410	
28-AD0222-JCX	SMD.CAP 2.2NF 25V +/-5%	1	C306	
27-PBC222-J0X	CAP. P.E 0.0022UF 63V +/-5%	1	C414	
27-MBC334-J0X	CAP. M.P.E 0.33UF 63V +/-5%	1	C305	
28-AB0330-JCX	SMD CAP 33PF 50V +/-5%	1	C303	
34-A608K6-1BX	COIL CHOKE 0.6 UH +/-10%	1	L401	
36-HDR029-XX0	TRANSFORMER HOR. DRIVE BCT-1012A	1	T401	
41-WJ0075-B00	WIRE BARE JUMPER 7.5MM	1	J405	
41-WJ0075-B00	WIRE BARE JUMPER 7.5MM	1	J305	
36-LIN450-XX1	COIL LINEARITY 45 UH	1	L402	
36-WID100-XX1	COIL WIDTH 10 UH +/-10%	1	L403	
41-WJ0075-B00	WIRE BARE JUMPER 7.5MM	1	J302	
41-WJ0075-B00	WIRE BARE JUMPER 7.5MM	1	J301	
41-WJ0125-B00	WIRE BARE JUMPER 12.5MM	1	J401	
41-WJ0125-B00	WIRE BARE JUMPER 12.5MM	1	J306	
41-WJ0125-B00	WIRE BARE JUMPER 12.5MM	1	J303	
46-33624H-04X	HS 3P 2468#24 270 TJC3-4Y/SCN-4Y	1	P402	
46-35184W-04X	PIN BASE *4 TJC1-4A	1	P401	
62-227680-0UA	BRACKET ABS-KINGFA 606 (UO)	1		FOR T402
64-B30080-104G	M/C SCREW B 3 X 8	1		FOR Q402
64-B30100-104G	M/C SCREW B 3 X 10	1		FOR IC301
67-384260-0E7	HEAT SINK	1		FOR Q402
67-H30752-DA0	HEAT SINK	1		FOR IC301
65-Z30050-23MG	NUT M 3	1		FOR IC301
09-BAS316-ATX	SMD.DIODE BAS316 115	1	D411	
19-AB0473-JTX	SMD. RES 47K OHM 1/10W 0603	1	R312	
19-AB0153-JTX	RES SMD 15K OHM 1/10W 0603	1	R313	

TTE Overseas Support Department

09-BAS316-ATX	SMD.DIODE BAS316 115	1	D309	
19-AB0000-JTX	RES SMD 0 OHM 1/10W +/-5% 0603	1	J314	
19-AB0000-JTX	RES SMD 0 OHM 1/10W +/-5% 0603	1	J406	
18-CE0152-JNX	RES. C.F. 1.5K OHM 1/2W +/-5%	1	R315	
37-SC2502-07Q01	FBT BSC25-0207Q	1	T402	
T8-EDN2AY-MAN	MAIN BD	1		
09-38C20V-DTX	SMD.DIODE BZX384-C20V 115	1	D253	
09-38C4V7-DTX	BZX384-C4V7 115	1	D206	
09-BAS316-ATX	SMD.DIODE BAS316 115	1	D205	
09-BAS316-ATX	SMD.DIODE BAS316 115	1	D251	
09-BAS316-ATX	SMD.DIODE BAS316 115	1	D002	
09-BAS316-ATX	SMD.DIODE BAS316 115	1	D001	
12-BC847B-0BX	NPN SMD. TRANSISTOR BC847B 215	1	Q250	
12-BC847B-0BX	NPN SMD. TRANSISTOR BC847B 215	1	Q203	
12-BC847B-0BX	NPN SMD. TRANSISTOR BC847B 215	1	Q001	
12-BC847B-0BX	NPN SMD. TRANSISTOR BC847B 215	1	Q002	
12-BC857B-0BX	PNP SMD. TRANSISTOR BC857B 215	1	Q251	
12-BC857B-0BX	PNP SMD. TRANSISTOR BC857B 215	1	Q202	
12-BC857B-0BX	PNP SMD. TRANSISTOR BC857B 215	1	Q204	
13-00M24C-08B	IC EEPROM 8K M24C08	1	IC002	
13-SDA555-XFP	IC SDA555XFL (WRITE)	1	IC001	
13-TB1238-ANP	IC TB1238AN (P/SIF/VCD) CH/JP	1	IC201	
18-CE0121-JNX	RES. C.F. 120 OHM 1/2W +/-5%	1	R225	
19-AB0000-JTX	RES SMD 0 OHM 1/10W +/-5% 0603	1	J005	
19-AB0000-JTX	RES SMD 0 OHM 1/10W +/-5% 0603	1	J004	
19-AB0000-JTX	RES SMD 0 OHM 1/10W +/-5% 0603	1	J006	
19-AB0000-JTX	RES SMD 0 OHM 1/10W +/-5% 0603	1	J002	
19-AB0000-JTX	RES SMD 0 OHM 1/10W +/-5% 0603	1	J001	
19-AB0000-JTX	RES SMD 0 OHM 1/10W +/-5% 0603	1	J009	
19-AB0000-JTX	RES SMD 0 OHM 1/10W +/-5% 0603	1	J207	
19-AB0000-JTX	RES SMD 0 OHM 1/10W +/-5% 0603	1	J010	
19-AB0000-JTX	RES SMD 0 OHM 1/10W +/-5% 0603	1	J012	
19-AB0000-JTX	RES SMD 0 OHM 1/10W +/-5% 0603	1	J011	
19-AB0000-JTX	RES SMD 0 OHM 1/10W +/-5% 0603	1	J032	

TTE Overseas Support Department

19-AB0000-JTX	RES SMD 0 OHM 1/10W +/-5% 0603	1	J031	
19-AB0000-JTX	RES SMD 0 OHM 1/10W +/-5% 0603	1	J030	
19-AB0000-JTX	RES SMD 0 OHM 1/10W +/-5% 0603	1	J027	
19-AB0000-JTX	RES SMD 0 OHM 1/10W +/-5% 0603	1	J026	
19-AB0000-JTX	RES SMD 0 OHM 1/10W +/-5% 0603	1	J025	
19-AB0000-JTX	RES SMD 0 OHM 1/10W +/-5% 0603	1	J204	
19-AB0000-JTX	RES SMD 0 OHM 1/10W +/-5% 0603	1	J227	
41-WJ0100-B00	WIRE BARE JUMPER 10MM	1	J023	
19-AB0101-JTX	RES SMD 100 OHM 1/10W 0603	1	R001	
19-AB0101-JTX	RES SMD 100 OHM 1/10W 0603	1	R029	
19-AB0101-JTX	RES SMD 100 OHM 1/10W 0603	1	R028	
19-AB0101-JTX	RES SMD 100 OHM 1/10W 0603	1	R234	
19-AB0561-JTX	RES SMD 560 OHM 1/10W 0603	1	R219	
19-AB0101-JTX	RES SMD 100 OHM 1/10W 0603	1	R027	
19-AB0101-JTX	RES SMD 100 OHM 1/10W 0603	1	R003	
19-AB0101-JTX	RES SMD 100 OHM 1/10W 0603	1	R251	
19-AB0101-JTX	RES SMD 100 OHM 1/10W 0603	1	R007	
19-AB0101-JTX	RES SMD 100 OHM 1/10W 0603	1	R009	
19-AB0101-JTX	RES SMD 100 OHM 1/10W 0603	1	R043	
19-AB0102-JTX	RES SMD 1K OHM 1/10W 0603	1	R031	
19-AB0102-JTX	RES SMD 1K OHM 1/10W 0603	1	R034	
19-AB0102-JTX	RES SMD 1K OHM 1/10W 0603	1	R016	
19-AB0102-JTX	RES SMD 1K OHM 1/10W 0603	1	R235	
19-AB0102-JTX	RES SMD 1K OHM 1/10W 0603	1	R020	
19-AB0102-JTX	RES SMD 1K OHM 1/10W 0603	1	R032	
19-AB0102-JTX	RES SMD 1K OHM 1/10W 0603	1	R224	
19-AB0102-JTX	RES SMD 1K OHM 1/10W 0603	1	R223	
19-AB0102-JTX	RES SMD 1K OHM 1/10W 0603	1	R222	
19-AB0102-JTX	RES SMD 1K OHM 1/10W 0603	1	R033	
19-AB0102-JTX	RES SMD 1K OHM 1/10W 0603	1	R256	
19-AB0103-JTX	RES SMD 10K OHM 1/10W 0603	1	R218	
19-AB0103-JTX	RES SMD 10K OHM 1/10W 0603	1	R022	
19-AB0103-JTX	RES SMD 10K OHM 1/10W 0603	1	R021	
19-AB0103-JTX	RES SMD 10K OHM 1/10W 0603	1	R017	

TTE Overseas Support Department

19-AB0103-JTX	RES SMD 10K OHM 1/10W 0603	1	R044
19-AB0103-JTX	RES SMD 10K OHM 1/10W 0603	1	R010
19-AB0103-JTX	RES SMD 10K OHM 1/10W 0603	1	R008
19-AB0103-JTX	RES SMD 10K OHM 1/10W 0603	1	R004
19-AB0103-JTX	RES SMD 10K OHM 1/10W 0603	1	R002
19-AB0154-FTX	SMD. RES 150K OHM 1/10W +/-1%	1	R202
19-AB0104-JTX	SMD. RES 100K OHM 1/10W 0603	1	R260
19-AB0104-JTX	SMD. RES 100K OHM 1/10W 0603	1	R023
19-AB0104-JTX	SMD. RES 100K OHM 1/10W 0603	1	R019
19-AB0123-JTX	SMD. RES 12K OHM 1/10 J 0603	1	R226
19-AB0562-JTX	SMD. RES 5.6K OHM 1/10W +/-5% 0603	1	R035
19-AB0152-JTX	SMD. RES 1.5K OHM 1/10W +/-5% 0603	1	R011
19-AB0121-FTX	SMD. RES 120 OHM 1/10W +/-1% 0603	1	R255
19-AB0221-JTX	RES SMD 220 OHM 1/10W 0603	1	R230
19-AB0101-JTX	RES SMD 100 OHM 1/10W 0603	1	R030
19-AB0221-JTX	RES SMD 220 OHM 1/10W 0603	1	R231
19-AB0221-JTX	RES SMD 220 OHM 1/10W 0603	1	R232
19-AB0222-JTX	RES SMD 2.2K OHM 1/10W 0603	1	R257
19-AB0222-JTX	RES SMD 2.2K OHM 1/10W 0603	1	R221
19-AB0103-JTX	RES SMD 10K OHM 1/10W 0603	1	R038
19-AB0223-JTX	SMD. RES 22K OHM 1/10W +/-5% 0603	1	R215
19-AB0224-JTX	SMD RES 220K OHM 1/10W 0603	1	R227
19-AB0271-JTX	SMD. RES 270 OHM 1/10W +/-5% 0603	1	R212
19-AB0271-JTX	SMD. RES 270 OHM 1/10W +/-5% 0603	1	R211
19-AB0271-JTX	SMD. RES 270 OHM 1/10W +/-5% 0603	1	R210
19-AB0301-JTX	SMD. RES 300 OHM 1/10W +/-5%	1	R258
19-AB0303-JTX	RES SMD 30K OHM 1/10W 0603	1	R205
19-AB0332-JTX	SMD RES 3.3K OHM 1/10W 0603	1	R233
19-AB0333-FTX	SMD. RES 33K OHM 1/10W +/-1% 0603	1	R201
19-AB0333-FTX	SMD. RES 33K OHM 1/10W +/-1% 0603	1	R250
19-AB0391-FTX	SMD. RES 390 OHM 1/10W +/-1% 0603	1	R254
19-AB0101-JTX	RES SMD 100 OHM 1/10W 0603	1	R217
19-AB0101-JTX	RES SMD 100 OHM 1/10W 0603	1	R216
19-AB0393-JTX	SMD. RES 39K OHM 1/10W +/-5%	1	R203

TTE Overseas Support Department

19-AB0393-JTX	SMD. RES 39K OHM 1/10W +/-5%	1	R204	
19-AB0470-JTX	RES SMD 47 OHM 1/10W +/-5%0603	1	R013	
19-AB0470-JTX	RES SMD 47 OHM 1/10W +/-5%0603	1	R014	
19-AB0102-JTX	RES SMD 1K OHM 1/10W 0603	1	R026	
19-AB0223-JTX	SMD. RES 22K OHM 1/10W +/-5% 0603	1	R253	
19-AB0473-JTX	SMD. RES 47K OHM 1/10W 0603	1	R018	
19-AB0750-JTX	SMD. RES 75 OHM 1/10W 0603	1	R236	
19-AB0751-JTX	SMD. RES 750 OHM 1/10W 0603	1	R012	
19-AB0821-JTX	SMD. RES 820 OHM 1/10W +/-5% 0603	1	R228	
19-AB0821-JTX	SMD. RES 820 OHM 1/10W +/-5% 0603	1	R229	
25-BCB100-M1X	CAP. ELEC 10 UF 16V +/-20%	1	C001	
25-BCB100-M1X	CAP. ELEC 10 UF 16V +/-20%	1	C035	
25-BCB100-M1X	CAP. ELEC 10 UF 16V +/-20%	1	C245	
25-BCB100-M1X	CAP. ELEC 10 UF 16V +/-20%	1	C003	
25-BCB100-M1X	CAP. ELEC 10 UF 16V +/-20%	1	C005	
25-BCB100-M1X	CAP. ELEC 10 UF 16V +/-20%	1	C013	
25-BCB100-M1X	CAP. ELEC 10 UF 16V +/-20%	1	C014	
25-BCB100-M1X	CAP. ELEC 10 UF 16V +/-20%	1	C041	
25-BCB100-M1X	CAP. ELEC 10 UF 16V +/-20%	1	C037	
25-BCB100-M1X	CAP. ELEC 10 UF 16V +/-20%	1	C039	
25-BCB100-M1X	CAP. ELEC 10 UF 16V +/-20%	1	C213	
25-BCB101-M1X	CAP. ELEC 100 UF 16V +/-20%	1	C236	
25-BCB101-M1X	CAP. ELEC 100 UF 16V +/-20%	1	C225	
25-BCB100-M1X	CAP. ELEC 10 UF 16V +/-20%	1	C247	
25-BCB221-M1X	CAP. ELEC 220 UF 16V +/-20%	1	C224	
25-BCB470-M1X	CAP. ELEC 47 UF 16V +/-20%	1	C241	
25-BCB470-M1X	CAP. ELEC 47 UF 16V +/-20%	1	C202	
25-BFB100-M1X	CAP. ELEC 10 UF 50V +/-20%	1	C219	
25-BFB109-M1X	CAP. ELEC 1 UF 50V +/-20%	1	C234	
25-BFB109-M1X	CAP. ELEC 1 UF 50V +/-20%	1	C026	
25-BFB109-M1X	CAP. ELEC 1 UF 50V +/-20%	1	C206	
25-MFB478-K1X	CAP.ELEC 50V 0.47UF +/-10%	1	C208	
25-MFB478-K1X	CAP.ELEC 50V 0.47UF +/-10%	1	C230	
25-MFB109-K1X	CAP.ELEC 1UF 50V +/-10%	1	C220	

TTE Overseas Support Department

27-MBC104-J0X	CAP. M.P.E 0.1 UF 63V +/-5%	1	C238	
27-MBC474-J0X	CAP. M.P.E 0.47UF 63V +/-5%	1	C222	
27-PBC152-J0X	CAP. P.E 0.0015UF 63V +/-5%	1	C201	
28-AB0101-JCX	SMD. CAP 100 PF 50VDC +/-5%	1	C239	
28-AB0102-JCX	SMD. CAP 1000PF 50V +/-5% 0603	1	C243	
28-AB0102-KBX	SMD. CAP 1000 PF 50V +/-10% B	1	C221	
28-AB0103-KBX	SMD. CAP 0.01 UF 50V +/-10% 0603	1	C226	
28-AB0103-KBX	SMD. CAP 0.01 UF 50V +/-10% 0603	1	C223	
28-AB0103-KBX	SMD. CAP 0.01 UF 50V +/-10% 0603	1	C214	
28-AB0103-KBX	SMD. CAP 0.01 UF 50V +/-10% 0603	1	C025	
28-AB0103-KBX	SMD. CAP 0.01 UF 50V +/-10% 0603	1	C244	
28-AB0103-KBX	SMD. CAP 0.01 UF 50V +/-10% 0603	1	C242	
28-AB0103-KBX	SMD. CAP 0.01 UF 50V +/-10% 0603	1	C237	
28-AB0103-KBX	SMD. CAP 0.01 UF 50V +/-10% 0603	1	C203	
28-AB0103-KBX	SMD. CAP 0.01 UF 50V +/-10% 0603	1	C011	
28-AB0103-KBX	SMD. CAP 0.01 UF 50V +/-10% 0603	1	C205	
28-AB0103-KBX	SMD. CAP 0.01 UF 50V +/-10% 0603	1	C012	
28-AB0104-KBX	SMD. CAP 50VDC 0.1UF +/-10% 06	1	C006	
28-AB0104-KBX	SMD. CAP 50VDC 0.1UF +/-10% 06	1	C210	
28-AB0104-KBX	SMD. CAP 50VDC 0.1UF +/-10% 06	1	C211	
28-AB0104-KBX	SMD. CAP 50VDC 0.1UF +/-10% 06	1	C212	
28-AB0104-KBX	SMD. CAP 50VDC 0.1UF +/-10% 06	1	C034	
28-AB0104-KBX	SMD. CAP 50VDC 0.1UF +/-10% 06	1	C036	
28-AB0104-KBX	SMD. CAP 50VDC 0.1UF +/-10% 06	1	C038	
28-AB0104-KBX	SMD. CAP 50VDC 0.1UF +/-10% 06	1	C002	
28-AB0104-KBX	SMD. CAP 50VDC 0.1UF +/-10% 06	1	C229	
28-AB0104-KBX	SMD. CAP 50VDC 0.1UF +/-10% 06	1	C232	
28-AB0104-KBX	SMD. CAP 50VDC 0.1UF +/-10% 06	1	C004	
28-AB0104-KBX	SMD. CAP 50VDC 0.1UF +/-10% 06	1	C233	
28-AB0104-KBX	SMD. CAP 50VDC 0.1UF +/-10% 06	1	C204	
28-AB0100-JCX	SMD. CAP 10 PF 50VDC +/-5%	1	C209	
28-AB0150-JCX	CAP.SMD 15P 50V +/-5% 0603	1	C023	
28-AB0150-JCX	CAP.SMD 15P 50V +/-5% 0603	1	C020	
28-AB0150-JCX	CAP.SMD 15P 50V +/-5% 0603	1	C017	

TTE Overseas Support Department

28-AB0150-JCX	CAP.SMD 15P 50V +/-5% 0603	1	C024	
28-AB0221-JCX	CAP.SMD 220PF 50V C 0603 +/-5%	1	C008	
28-AB0221-JCX	CAP.SMD 220PF 50V C 0603 +/-5%	1	C007	
28-AB0221-JCX	CAP.SMD 220PF 50V C 0603 +/-5%	1	C009	
28-AB0222-KBX	CAP.SMD 2200PF 50V +/-10% 0603	1	C207	
28-AB0330-JCX	SMD CAP 33PF 50V +/-5%	1	C030	
28-AB0330-JCX	SMD CAP 33PF 50V +/-5%	1	C015	
28-AB0330-JCX	SMD CAP 33PF 50V +/-5%	1	C016	
28-AB0330-JCX	SMD CAP 33PF 50V +/-5%	1	C031	
28-AB0331-KBX	SMD. CAP 330 PF 50VDC +/-10%	1	C042	
28-AB0470-JCX	CAP.SMD 47PF 50V +/-5% 0603	1	C018	
28-AB0470-JCX	CAP.SMD 47PF 50V +/-5% 0603	1	C019	
28-AB0470-JCX	CAP.SMD 47PF 50V +/-5% 0603	1	C021	
28-AB0470-JCX	CAP.SMD 47PF 50V +/-5% 0603	1	C022	
28-AB0560-JCX	SMD CAP. 56 PF 50V +/-5% 0603	1	C251	
28-AB0560-JCX	SMD CAP. 56 PF 50V +/-5% 0603	1	C252	
28-AB0472-KBX	CAP.SMD 4700PF 50V +/-10% 0603	1	C235	
28-AB0472-KBX	CAP.SMD 4700PF 50V +/-10% 0603	1	C231	
28-AB0829-CCX	SMD. CAP. 8.2 pF 50VDC +/-0.25% 0603	1	C010	
33-KLL120-KTX	SMD. COIL 12 UH +/-10% 0603	1	L203	
34-A220K0-1IX	COIL PL - 22UH +/-10% LGA0305-220K	1	L007	
34-A220K0-1IX	COIL PL - 22UH +/-10% LGA0305-220K	1	L006	
34-A220K0-1IX	COIL PL - 22UH +/-10% LGA0305-220K	1	L005	
34-A220K0-1IX	COIL PL - 22UH +/-10% LGA0305-220K	1	L003	
34-A220K0-1IX	COIL PL - 22UH +/-10% LGA0305-220K	1	L002	
34-A220K0-1IX	COIL PL - 22UH +/-10% LGA0305-220K	1	L001	
34-A330K0-1IX	COIL CHOKE 33UH +/-10%	1	L208	
41-WJ0100-B00	WIRE BARE JUMPER 10MM	1	L207	
18-CB0330-JNX	RES. C.F. 33 OHM 1/6W +/-5%	1	L206	
34-A330K0-1IX	COIL CHOKE 33UH +/-10%	1	L205	
33-KLN102-NTX	SMD.COLL MGGB1608M102HB	1	L204	
34-A330K0-1IX	COIL CHOKE 33UH +/-10%	1	L201	
33-KLL120-KTX	SMD. COIL 12 UH +/-10% 0603	1	L202	
38-236083-00X	COIL IFT FOR VCO 45.75MHZ	1	T201	

TTE Overseas Support Department

40-M70001-MAE1X	P.C.B MAIN BD	1	
41-BF0100-0GG	WIRE 1007#24 100MM	1	A1 TO A2
41-WJ0075-B00	WIRE BARE JUMPER 7.5MM	1	J219
41-WJ0075-B00	WIRE BARE JUMPER 7.5MM	1	J008
41-WJ0075-B00	WIRE BARE JUMPER 7.5MM	1	J007
41-WJ0100-B00	WIRE BARE JUMPER 10MM	1	J017
41-WJ0075-B00	WIRE BARE JUMPER 7.5MM	1	J021
41-WJ0075-B00	WIRE BARE JUMPER 7.5MM	1	J028
41-WJ0075-B00	WIRE BARE JUMPER 7.5MM	1	J206
41-WJ0125-B00	WIRE BARE JUMPER 12.5MM	1	J013
41-WJ0075-B00	WIRE BARE JUMPER 7.5MM	1	J218
41-WJ0075-B00	WIRE BARE JUMPER 7.5MM	1	J020
41-WJ0075-B00	WIRE BARE JUMPER 7.5MM	1	J003
41-WJ0100-B00	WIRE BARE JUMPER 10MM	1	J226
41-WJ0100-B00	WIRE BARE JUMPER 10MM	1	J029
41-WJ0100-B00	WIRE BARE JUMPER 10MM	1	J225
41-WJ0100-B00	WIRE BARE JUMPER 10MM	1	J210
41-WJ0100-B00	WIRE BARE JUMPER 10MM	1	J209
41-WJ0100-B00	WIRE BARE JUMPER 10MM	1	J015
41-WJ0100-B00	WIRE BARE JUMPER 10MM	1	J016
41-WJ0100-B00	WIRE BARE JUMPER 10MM	1	J215
41-WJ0100-B00	WIRE BARE JUMPER 10MM	1	J205
41-WJ0100-B00	WIRE BARE JUMPER 10MM	1	J220
41-WJ0100-B00	WIRE BARE JUMPER 10MM	1	J217
41-WJ0125-B00	WIRE BARE JUMPER 12.5MM	1	J208
41-WJ0125-B00	WIRE BARE JUMPER 12.5MM	1	J201
41-WJ0125-B00	WIRE BARE JUMPER 12.5MM	1	J202
41-WJ0125-B00	WIRE BARE JUMPER 12.5MM	1	J019
41-WJ0100-B00	WIRE BARE JUMPER 10MM	1	J022
41-WJ0100-B00	WIRE BARE JUMPER 10MM	1	J018
41-WJ0125-B00	WIRE BARE JUMPER 12.5MM	1	J223
41-WJ0125-B00	WIRE BARE JUMPER 12.5MM	1	J014
41-WJ0125-B00	WIRE BARE JUMPER 12.5MM	1	J212
41-WJ0150-B00	WIRE BARE JUMPER 15MM	1	J216

TTE Overseas Support Department

41-WJ0125-B00	WIRE BARE JUMPER 12.5MM	1	J203	
41-WJ0150-B00	WIRE BARE JUMPER 15MM	1	J221	
41-WJ0150-B00	WIRE BARE JUMPER 15MM	1	J213	
41-WJ0150-B00	WIRE BARE JUMPER 15MM	1	J214	
41-WJ0150-B00	WIRE BARE JUMPER 15MM	1	J024	
41-WJ0200-B00	WIRE BARE JUMPER 20MM	1	J222	
41-WJ0200-B00	WIRE BARE JUMPER 20MM	1	J211	
45-FIL4M5-0Y1	CERAMIC FILTER SFSH4.5MDB	1	X208	
45-OSC4M4-3Y0	CRYSTAL 4.43MHZ (CL=16PF)	1	X201	
45-OSC6M0-0Y0	CRYSTAL 6MHZ	1	X001	
45-TRA4M5-0Y0	CER TRAP TPS 4.5MHZ	1	X209	
46-33079W-04X	PIN BASE *4 TJC3-4A	1	P001	
46-33079W-07X	PIN BASE *7 TJC3-7A	1	P002	
46-33630H-05X	HS 5P24 280 F/W TJC3-5Y/SCN-5Y	1	P201	
19-AB0123-FTX	SMD. RES 12K OHM 1/10W +/-1% 0603	1	R084	
19-AB0123-FTX	SMD. RES 12K OHM 1/10W +/-1% 0603	1	R080	
27-MBC104-J0X	CAP. M.P.E 0.1 UF 63V +/-5%	1	C043	
19-AB0472-JTX	RES SMD 4.7K OHM 1/10W 0603	1	R045	
19-AB0224-JTX	SMD RES 220K OHM 1/10W 0603	1	R046	
12-BC847B-0BX	NPN SMD. TRANSISTOR BC847B 215	1	Q003	
19-AB0102-JTX	RES SMD 1K OHM 1/10W 0603	1	R905	
19-AB0102-JTX	RES SMD 1K OHM 1/10W 0603	1	R906	
12-BC847B-0BX	NPN SMD. TRANSISTOR BC847B 215	1	Q905	
63-B30100-AB4G	S/T SCREW B 3 X 10 AB	1	MTG POWER PCB	
19-AB0473-JTX	SMD. RES 47K OHM 1/10W 0603	1	R261	
41-WJ0100-B00	WIRE BARE JUMPER 10MM	1	J228	
41-WJ0100-B00	WIRE BARE JUMPER 10MM	1	J229	
62-EDN2MB-0UN	MAIN BOARD BRACKET (FIRST EDITION)	1		
19-AB0000-JTX	RES SMD 0 OHM 1/10W +/-5% 0603	1	J033	
19-AB0000-JTX	RES SMD 0 OHM 1/10W +/-5% 0603	1	J034	
19-AB0000-JTX	RES SMD 0 OHM 1/10W +/-5% 0603	1	J035	
19-AB0000-JTX	RES SMD 0 OHM 1/10W +/-5% 0603	1	J036	
19-AB0000-JTX	RES SMD 0 OHM 1/10W +/-5% 0603	1	J038	
41-WJ0100-B00	WIRE BARE JUMPER 10MM	1	J037	

TTE Overseas Support Department

41-WJ0075-B00	WIRE BARE JUMPER 7.5MM	1	J115	
28-AB0101-JCX	SMD. CAP 100 PF 50VDC +/-5%	1	C109	
28-AB0101-JCX	SMD. CAP 100 PF 50VDC +/-5%	1	C110	
19-AB0223-FTX	SMD. RES 22K OHM 1/10W +/-1%	1	R202A	
41-WJ0100-B00	WIRE BARE JUMPER 10MM	1	N201	
19-AB0000-JTX	RES SMD 0 OHM 1/10W +/-5% 0603	1	N202	
19-AB0102-JTX	RES SMD 1K OHM 1/10W 0603	1	R921	
40-M70001-LPE1X	P.C.B LP BD	1		
40-M70001-RPE1X	P.C.B RP BD	1		
46-31790H-02X01	HS 2PIN	1	W602	
46-CD040T-03J02	HS 3PIN	1	W601	
47-RCA018-XX0	JACK RCA AV-3.2-1W-G2 RED	1	P602A	
47-RCA007-XX0	JACK RCA AV-3.2-1W-G3 WHITE	1	P601A	
T8-EDN2AY-PWY	POWER PARTS	1		
09-38C3V3-DTX	SMD.DIODE BZX384-C3V3 115	1	D855	
09-38C5V1-DTX	SMD.DIODE BZX384-C5V1 115	1	D854	
09-38C8V2-DTX	SMD.DIODE BZX384-C8V2 115	1	D844	
09-BAS316-ATX	SMD.DIODE BAS316 115	1	D856	
09-BAS316-ATX	SMD.DIODE BAS316 115	1	D853	
10-0001H8-FBX	DIODE 1H8 (FAST RECOVERY)	1	D809	
10-0RU3YX-F0X	DIODE RU3YX (FAST RECTIFIER)	1	D841	
10-0RU3YX-F0X	DIODE RU3YX (FAST RECTIFIER)	1	D830	
10-0RL255-EBX	DIODE RL255 OR RL206(POWER RECTIFIER)	1	D801	
10-0RL255-EBX	DIODE RL255 OR RL206(POWER RECTIFIER)	1	D802	
10-0RL255-EBX	DIODE RL255 OR RL206(POWER RECTIFIER)	1	D804	
10-0RL255-EBX	DIODE RL255 OR RL206(POWER RECTIFIER)	1	D803	
10-0RU3AM-F0X	DIODE RU3AM (FAST RECOVERY)	1	D833	
10-1N4148-ABX	DIODE 1N4148 (SWITCHING)	1	D814	
10-1N4148-ABX	DIODE 1N4148 (SWITCHING)	1	D820	
11-SD2012-0CX	TRANSISTOR 2SD2012	1	Q843	
11-P5NK50-0AX	TRANSISTOR STP5NK50ZFP	1	Q815	
11-SA1015-YBX	TRANSISTOR ST2SA1015Y (PNP)	1	Q801	
12-BC847A-0BX	SMD TRANSISTOR BC847A (NPN)	1	Q802	
12-BC847A-0BX	SMD TRANSISTOR BC847A (NPN)	1	Q844	

TTE Overseas Support Department

12-BC847A-0BX	SMD TRANSISTOR BC847A (NPN)	1	Q845	
12-BC857B-0BX	PNP SMD. TRANSISTOR BC857B 215	1	Q852	
13-000TL4-31T	IC TL431ACLP	1	IC803	
13-0HPC92-2CP	PHOTO COUPLER HPC922-C	1	IC802	
13-0L7805-CVS	+5V 1.5A IC L7805CV	1	IC402	
13-TEA150-6TB	IC TEA1506T/N1 118	1	IC801	
18-CD0101-JNX	RES. C.F. 100 OHM 1/4W +/-5%	1	R813	
18-CD0102-JNX	RES. C.F. 1K OHM 1/4W +/-5%	1	R845	
18-CD0222-JNX	RES. C.F. 2.2K OHM 1/4W +/-5%	1	R817	
18-CD0220-JNX	RES. C.F. 22 OHM 1/4W +/-5%	1	R820	
18-DE0823-FNX2	RES. M.F. 82K OHM 1/2W +/-1%	1	R839	
18-EF0109-JGX	RES. FUS. 1 OHM 1W +/-5% (LS)	1	R843	
18-FF0334-JGX	RES. M.O. 330K OHM 1W +/-5%	1	R804	
18-CD0751-JNX	RES. C.F. 750 OHM 1/4W +/-5%	1	R854	
18-FG0683-JHX	RES. M.O. 68K OHM 2W +/-5%	1	R810	
18-KF0825-JHX	RES. GLASS GLAZE 8.2M OHM 1W	1	R829	
18-RG0158-JHX	RES. WIRE ROUND 0.15 OHM 2W +/-5%	1	R815	
19-AB0000-JTX	RES SMD 0 OHM 1/10W +/-5% 0603	1	J818	
19-AB0100-JTX	RES SMD 10 OHM 1/10W +/-5%	1	R814	
19-AB0102-JTX	RES SMD 1K OHM 1/10W 0603	1	R844	
19-AB0102-JTX	RES SMD 1K OHM 1/10W 0603	1	R857	
19-AB0102-JTX	RES SMD 1K OHM 1/10W 0603	1	R856	
19-AB0202-JTX	SMD. RES 2K OHM 1/10W +/-5% 0603	1	R855	
19-AB0103-JTX	RES SMD 10K OHM 1/10W 0603	1	R851	
19-AB0122-JTX	SMD. RES 1.2K OHM 1/10 J 0603	1	R811	
19-AB0333-JTX	RES. SMD 33K OHM 1/10W 0603	1	R837	
19-AB0224-JTX	SMD RES 220K OHM 1/10W 0603	1	R819	
19-AB0332-JTX	SMD RES 3.3K OHM 1/10W 0603	1	R812	
19-AB0333-JTX	RES. SMD 33K OHM 1/10W 0603	1	R818	
19-AB0334-JTX	RES SMD 330K OHM 1/10W +/-5% 0603	1	R822	
19-AB0202-FTX	SMD. RES 2K OHM 1/10W +/-1% 0603	1	R838	
19-AB0623-FTX	SMD.RES 62K OHM 1/16W +/-1%	1	R842	
19-AB0471-JTX	SMD. RES 470 OHM 1/10W +/-5%	1	R821	
19-AB0472-JTX	RES SMD 4.7K OHM 1/10W 0603	1	R836	

TTE Overseas Support Department

19-AB0681-JTX	SMD. RES. 680 OHM 1/10W 0603	1	R835	
19-AB0683-JTX	RES SMD 68K OHM 1/10W 0603	1	R853	
22-NTC479-XX0	NTC 4.7 OHM +/-18% NTC4.7D2-14	1	R803	
22-PTC909-3A5	PTC 9 OHM	1	RT801	
25-BCA102-M1X	CAP. ELEC 1000 UF 16V +/-20%	1	C843	
25-BCA102-M1X	CAP. ELEC 1000 UF 16V +/-20%	1	C845	
25-BCB221-M1X	CAP. ELEC 220 UF 16V +/-20%	1	C418	
25-BCB100-M1X	CAP. ELEC 10 UF 16V +/-20%	1	C854	
25-BCB101-M1X	CAP. ELEC 100 UF 16V +/-20%	1	C423	
25-BCB471-M1X	CAP. ELEC 470 UF 16V +/-20%	1	C855	
25-BCB471-M1X	CAP. ELEC 470 UF 16V +/-20%	1	C832	
25-BFB479-M1X	CAP. ELEC 4.7 UF 50V +/-20%	1	C853	
25-BDB220-M1X	CAP. ELEC 22 UF 25V +/-20%	1	C820	
25-BDB470-M1X	CAP. ELEC 47 UF 25V +/-20%	1	C850	
25-DFB109-M1X	CAP. ELEC 1 UF 50V +/-20% NP	1	C834	
25-PJG101-M1X	CAP.CELE 100UF/160V/+/-20%	1	C835	
25-BKJ221-M1X	CAP. ELEC 220 UF 200V +/-20%	1	C806	
26-AIC221-KBX	CAP. CER 220 PF 500V +/-10% B	1	C830	
26-AIC221-KBX	CAP. CER 220 PF 500V +/-10% B	1	C841	
26-AIM103-KBX	CAP. CER 0.01UF 500V +/-10% B	1	C805	
26-AIM103-KBX	CAP. CER 0.01UF 500V +/-10% B	1	C826	
26-AKA221-KRX	CAP. CER 220 PF 1KV +/-10%	1	C833	
26-AKA221-KRX	CAP. CER 220 PF 1KV +/-10%	1	C809	
26-AKK103-MFX	CAP. CER 10 NF 1KVDC +/-20%	1	C810	
26-AMK152-KBX	CAP. CER 1500 PF 2KV +/-10% B	1	C815	
26-APK102-ME4	CAP. CER 1000PF 400VAC+/-20% E	1	C803	
26-APK102-ME4	CAP. CER 1000PF 400VAC+/-20% E	1	C804	
26-APK102-ME4	CAP. CER 1000PF 400VAC+/-20% E	1	C829	
26-AQK472-ZFX	CAP. CER 4700PF 250VAC +80%-20% F	1	C808	
26-AQK472-ZFX	CAP. CER 4700PF 250VAC +80%-20% F	1	C807	
27-AQT224-MV3	CAP.M.PP 0.22UF 250VAV +/-20%	1	C801	
27-MHM104-K0X	CAP. M.P.E 0.1 UF 400V +/-10%	1	C802	
28-AB0102-KBX	SMD. CAP 1000 PF 50V +/-10% B	1	C839	
28-AB0103-KBX	SMD. CAP 0.01 UF 50V +/-10% 0603	1	C425	

TTE Overseas Support Department

28-AB0103-KBX	SMD. CAP 0.01 UF 50V +/-10% 0603	1	C417	
28-AB0103-KBX	SMD. CAP 0.01 UF 50V +/-10% 0603	1	C852	
28-AB0103-KBX	SMD. CAP 0.01 UF 50V +/-10% 0603	1	C844	
26-ABC103-ZFX	CAP. CER 0.01 UF 50V +80-20% F	1	C831	
26-ABC103-ZFX	CAP. CER 0.01 UF 50V +80-20% F	1	C842	
28-AB0221-JCX	CAP.SMD 220PF 50V C 0603 +/-5%	1	C821	
28-AB0104-KBX	SMD. CAP 50VDC 0.1UF +/-10% 06	1	C837	
28-AB0224-ZFX	CAP.SMD 0.22UF 50V +80-20%0603	1	C818	
28-AB0473-KBX	SMD CAP 0.047UF 50V +/-10%0603	1	C811	
34-R101K2-1BX	COIL CHOKE 100 UH +/-10%	1	L834	
34-R101K2-1BX	COIL CHOKE 100 UH +/-10%	1	L843	
35-392170-00X	FERR.COIL BF-I35050C-683	1	L833	
35-392170-00X	FERR.COIL BF-I35050C-683	1	L840	
35-392170-00X	FERR.COIL BF-I35050C-683	1	L830	
35-LB1005-0IX	FERR BEAD H75 (3.5X1X5)	1	L815	
36-LIF010-XX0	LINE FILTER LCL-2821A	1	T801	
41-WJ0075-B00	WIRE BARE JUMPER 7.5MM	1	N802	
41-WJ0075-B00	WIRE BARE JUMPER 7.5MM	1	J822	
41-WJ0075-B00	WIRE BARE JUMPER 7.5MM	1	J809	
41-WJ0150-B00	WIRE BARE JUMPER 15MM	1	J821	
41-WJ0125-B00	WIRE BARE JUMPER 12.5MM	1	J813	
46-35063W-03X	PIN BASE *3 VH-3A	1	P805	
46-35063W-03X	PIN BASE *3 VH-3A	1	P804	
50-02000D-1GS1G	FUSE 2.0AT 250VAC 5MMX20MM	1	F801	
51-BC0190-0LN01	POWER CORD SP-120+NISPT-2 18AWG/2C	1		FOR P804
64-P30080-104G	M/C SCREW P 3 X 8	1		FOR IC402
64-P30080-104G	M/C SCREW P 3 X 8	1		FOR Q843
67-H10918-4M2	HEAT SINK	1		FOR Q843
67-H10918-4M2	HEAT SINK	1		FOR IC402
67-384260-0E7	HEAT SINK	1		FOR Q815
41-WJ0075-B00	WIRE BARE JUMPER 7.5MM	1	N801	
09-BAS316-ATX	SMD.DIODE BAS316 115	1	D840	
10-79C18V-DBX	DIODE ZENER 18V 1/2W 5%	1	D821	
13-78L33A-CZT	IC L78L33ACZ	1	IC804	

TTE Overseas Support Department

12-BC847A-0BX	SMD TRANSISTOR BC847A (NPN)	1	Q841	
12-BC847A-0BX	SMD TRANSISTOR BC847A (NPN)	1	Q842	
18-CE0330-JNX	RES. C.F. 33 OHM 1/2W +/-5%	1	R867	
19-AB0103-JTX	RES SMD 10K OHM 1/10W 0603	1	R846	
19-AB0103-JTX	RES SMD 10K OHM 1/10W 0603	1	R847	
19-AB0473-JTX	SMD. RES 47K OHM 1/10W 0603	1	R841	
28-AB0471-KBX	SMD.CAP. 470PF 50V +/-10%	1	C812	
28-AB0471-KBX	SMD.CAP. 470PF 50V +/-10%	1	C813	
28-AB0104-KBX	SMD. CAP 50VDC 0.1UF +/-10% 06	1	C814	
41-WJ0075-B00	WIRE BARE JUMPER 7.5MM	1	J815	
19-AB0000-JTX	RES SMD 0 OHM 1/10W +/-5% 0603	1	J810	
28-AB0104-KBX	SMD. CAP 50VDC 0.1UF +/-10% 06	1	C840	
64-B30060-303G	M/C SCREW 3 X 6 B	1		FOR Q815
19-AB0000-JTX	RES SMD 0 OHM 1/10W +/-5% 0603	1	J826	
19-AB0000-JTX	RES SMD 0 OHM 1/10W +/-5% 0603	1	J827	
41-WJ0075-B00	WIRE BARE JUMPER 7.5MM	1	J825	
41-WJ0125-B00	WIRE BARE JUMPER 12.5MM	1	J824	
66-20517X-0B7	FUSE HOLDER	2		FOR F801
10-1N4148-ABX	DIODE 1N4148 (SWITCHING)	1	D819	
18-CD0681-JNX	RES. C.F. 680 OHM 1/4W +/-5%	1	R858	
25-BFB109-M1X	CAP. ELEC 1 UF 50V +/-20%	1	C847	
41-WJ0125-B00	WIRE BARE JUMPER 12.5MM	1	J801	
41-WJ0075-B00	WIRE BARE JUMPER 7.5MM	1	J802	
41-WJ0125-B00	WIRE BARE JUMPER 12.5MM	1	J803	
41-WJ0075-B00	WIRE BARE JUMPER 7.5MM	1	J806	
41-WJ0075-B00	WIRE BARE JUMPER 7.5MM	1	J807	
41-WJ0075-B00	WIRE BARE JUMPER 7.5MM	1	J808	
41-WJ0150-B00	WIRE BARE JUMPER 15MM	1	J811	
41-WJ0075-B00	WIRE BARE JUMPER 7.5MM	1	J812	
41-WJ0100-B00	WIRE BARE JUMPER 10MM	1	J814	
41-WJ0075-B00	WIRE BARE JUMPER 7.5MM	1	J817	
41-WJ0125-B00	WIRE BARE JUMPER 12.5MM	1	J819	
41-WJ0075-B00	WIRE BARE JUMPER 7.5MM	1	J820	
19-AB0000-JTX	RES SMD 0 OHM 1/10W +/-5% 0603	1	J816	

TTE Overseas Support Department

19-AB0000-JTX	RES SMD 0 OHM 1/10W +/-5% 0603	1	J823	
36-TRF228-AX0	TRANSFORMER CONV.BCK-2872	1	T803	
T8-EDN2AY-RAY	REAR AV	1		
12-BC847B-0BX	NPN SMD. TRANSISTOR BC847B 215	1	Q901	
12-C124ET-0BX	SMD. TRANSISTOR PDTC124ET	1	Q903	
13-EF4053-BTB	IC HEF4053BT(D)	1	IC901	
19-AB0000-JTX	RES SMD 0 OHM 1/10W +/-5% 0603	1	J903	
19-AB0000-JTX	RES SMD 0 OHM 1/10W +/-5% 0603	1	J902	
19-AB0102-JTX	RES SMD 1K OHM 1/10W 0603	1	R902	
19-AB0102-JTX	RES SMD 1K OHM 1/10W 0603	1	R901	
19-AB0102-JTX	RES SMD 1K OHM 1/10W 0603	1	R928	
19-AB0102-JTX	RES SMD 1K OHM 1/10W 0603	1	R927	
19-AB0102-JTX	RES SMD 1K OHM 1/10W 0603	1	R915	
19-AB0102-JTX	RES SMD 1K OHM 1/10W 0603	1	R911	
19-AB0103-JTX	RES SMD 10K OHM 1/10W 0603	1	R904	
19-AB0103-JTX	RES SMD 10K OHM 1/10W 0603	1	R913	
19-AB0103-JTX	RES SMD 10K OHM 1/10W 0603	1	R912	
19-AB0223-JTX	SMD. RES 22K OHM 1/10W +/-5% 0603	1	R907	
19-AB0223-JTX	SMD. RES 22K OHM 1/10W +/-5% 0603	1	R908	
19-AB0223-JTX	SMD. RES 22K OHM 1/10W +/-5% 0603	1	R910	
19-AB0223-JTX	SMD. RES 22K OHM 1/10W +/-5% 0603	1	R909	
19-AB0471-JTX	SMD. RES 470 OHM 1/10W +/-5%	1	R914	
19-AB0820-JTX	SMD. RES 82 OHM 1/10W +/-5% 0603	1	R929	
19-AB0820-JTX	SMD. RES 82 OHM 1/10W +/-5% 0603	1	R903	
25-BCB100-M1X	CAP. ELEC 10 UF 16V +/-20%	1	C901	
25-BCB100-M1X	CAP. ELEC 10 UF 16V +/-20%	1	C902	
41-WJ0050-B00	WIRE BARE JUMPER 5MM	1	C908	
25-BCB100-M1X	CAP. ELEC 10 UF 16V +/-20%	1	C919	
25-BCB100-M1X	CAP. ELEC 10 UF 16V +/-20%	1	C920	
25-BCB101-M1X	CAP. ELEC 100 UF 16V +/-20%	1	C904	
25-BCB101-M1X	CAP. ELEC 100 UF 16V +/-20%	1	C903	
25-BCB101-M1X	CAP. ELEC 100 UF 16V +/-20%	1	C921	
28-AB0103-KBX	SMD. CAP 0.01 UF 50V +/-10% 0603	1	C907	
28-AB0103-KBX	SMD. CAP 0.01 UF 50V +/-10% 0603	1	C905	

TTE Overseas Support Department

33-KLN601-NTX	CHIP BEAD 600 OHM +/-25%	1	L931	
33-KLN601-NTX	CHIP BEAD 600 OHM +/-25%	1	L933	
41-WJ0075-B00	WIRE BARE JUMPER 7.5MM	1	J906	
41-WJ0075-B00	WIRE BARE JUMPER 7.5MM	1	J905	
41-WJ0100-B00	WIRE BARE JUMPER 10MM	1	L932	
41-WJ0100-B00	WIRE BARE JUMPER 10MM	1	L934	
41-WJ0200-B00	WIRE BARE JUMPER 20MM	1	J904	
46-33079W-06X	PIN BASE *6 TJC3-6A	1	P904	
25-BCB101-M1X	CAP. ELEC 100 UF 16V +/-20%	1	C909	
28-AB0222-KBX	CAP.SMD 2200PF 50V +/-10% 0603	1	C933	
28-AB0222-KBX	CAP.SMD 2200PF 50V +/-10% 0603	1	C934	
28-AB0222-KBX	CAP.SMD 2200PF 50V +/-10% 0603	1	C935	
28-AB0222-KBX	CAP.SMD 2200PF 50V +/-10% 0603	1	C936	
28-AB0222-KBX	CAP.SMD 2200PF 50V +/-10% 0603	1	C939	
28-AB0222-KBX	CAP.SMD 2200PF 50V +/-10% 0603	1	C940	
28-AB0222-KBX	CAP.SMD 2200PF 50V +/-10% 0603	1	C941	
28-AB0222-KBX	CAP.SMD 2200PF 50V +/-10% 0603	1	C942	
47-RCA203-XX0	AV JACK AV-3.2-3WK101	1	P901	
T8-EDN2AY-SSY	SOUND SWITCH	1		
12-BC847B-0BX	NPN SMD. TRANSISTOR BC847B 215	1	Q609	
18-CD0479-JNX	RES. C.F. 4.7 OHM 1/4W +/-5%	1	R918	
19-AB0102-JTX	RES SMD 1K OHM 1/10W 0603	1	R637	
25-BCB101-M1X	CAP. ELEC 100 UF 16V +/-20%	1	C918	
28-AB0103-KBX	SMD. CAP 0.01 UF 50V +/-10% 0603	1	C917	
T8-EDN2AY-TUY	TUNER BD	1		
07-457FF5-NA8	TUNER FSNA05T-4	1	TU101	
10-79C33V-DBX	DIODE ZENER 33V 1/2W 5%	1	D101A	
19-AB0000-JTX	RES SMD 0 OHM 1/10W +/-5% 0603	1	N101	
19-AB0000-JTX	RES SMD 0 OHM 1/10W +/-5% 0603	1	J113	
19-AB0000-JTX	RES SMD 0 OHM 1/10W +/-5% 0603	1	J112	
19-AB0000-JTX	RES SMD 0 OHM 1/10W +/-5% 0603	1	J111	
19-AB0000-JTX	RES SMD 0 OHM 1/10W +/-5% 0603	1	J110	
19-AB0101-JTX	RES SMD 100 OHM 1/10W 0603	1	R102	
19-AB0101-JTX	RES SMD 100 OHM 1/10W 0603	1	R101	

TTE Overseas Support Department

25-BFB101-M1X	CAP. ELEC 100 UF 50V +/-20%	1	C107	
25-BFB101-M1X	CAP. ELEC 100 UF 50V +/-20%	1	C103	
25-BFB479-M1X	CAP. ELEC 4.7 UF 50V +/-20%	1	C101	
28-AB0103-KBX	SMD. CAP 0.01 UF 50V +/-10% 0603	1	C108	
28-AB0103-KBX	SMD. CAP 0.01 UF 50V +/-10% 0603	1	C102	
34-A470K0-1IX	COIL CHOKE 47 UH +/-10%	1	L101	
41-WJ0075-B00	WIRE BARE JUMPER 7.5MM	1	J102	
41-WJ0075-B00	WIRE BARE JUMPER 7.5MM	1	J103	
41-WJ0075-B00	WIRE BARE JUMPER 7.5MM	1	J109	
41-WJ0075-B00	WIRE BARE JUMPER 7.5MM	1	J104	
41-WJ0075-B00	WIRE BARE JUMPER 7.5MM	1	J106	
41-WJ0075-B00	WIRE BARE JUMPER 7.5MM	1	J107	
41-WJ0075-B00	WIRE BARE JUMPER 7.5MM	1	J108	
41-WJ0125-B00	WIRE BARE JUMPER 12.5MM	1	J105	
45-SAWM19-71M	SAW FILTER M1971M	1	Z101	
19-AB0000-JTX	RES SMD 0 OHM 1/10W +/-5% 0603	1	N103	
41-WJ0100-B00	WIRE BARE JUMPER 10MM	1	J117	
41-WJ0125-B00	WIRE BARE JUMPER 12.5MM	1	J119	
T8-EDN2AY-SPY	SPEAKER	1		
63-W30100-AB4G	S/T SCREW W 3 X 10 AB	6	MTG FC&RC	
63-W30100-AB4G	S/T SCREW W 3 X 10 AB	4	MTG SP BR	
63-W30100-AB4G	S/T SCREW W 3 X 10 AB	4	MTG SP	
63-B30100-AB4G	S/T SCREW B 3 X 10 AB	4	MTG SP FIXER &RC	
T8-EDN2AY-SPYZ	ART WORK ASSEMBLY	1		
55-425680-0CN1A	POOH SP FC	1		
55-425690-0CN1A	POOH SP RC	1		
62-425700-0HN1A	POOH SP-BR(L)	1		
62-425710-0HN1A	POOH SP-BR	1		
42-G4516B-XX0	SPEAKER Y045-4T	1	SP601	
42-G4516B-XX0	SPEAKER Y045-4T	1	SP602	
62-425720-0HG	POOH FIXER SPBOX	1		
62-425730-0HG	POOH DCERSPBOX	1		
T8-EDN2AY-SWY	SWITCH BD	1		
40-M70002-SWB1X	P.C.B. SWITCH BD	1		

TTE Overseas Support Department

46-33079W-02X	PIN BASE *2 TJC3-2A	1	P003A	
48-TAC002-XX0	TACT SWITCH	1	S007A	
T8-EDN2AY-CRT	CRT PARTS	1		
02-GND014-XX0	ASS"Y - CRT GND WIRE&HOUSE	1	GROUND	
36-DEG140-AX3	DEGAUSSING COIL XC-38	1	T805	
44-14OFLP-IR1A	14"CRT 37SX110Y22-DC15	1	CRT	
46-20600H-04X	HS 4P A/B 360/13 RBGW TJC1-4Y	1	W401	
57-10654X-00F	TWIST TIE NY66	1		
67-X12668-0E0	SPRING CRT 6MMX40MMX0.5MM	1		
89-SN5055-JZ0	ADHESIVE TAPE OF DEGAUSSING COIL & CRT	1		FOR DEGAUSSING COIL
T8-EDN2AY-FCN	ASS"Y - FRONT CABINET	1		
63-W30120-AB4G	S/T SCREW W 3 X 12 AB	4	MTG SP JACK TO FC	
62-216340-0HA	HOLDER AC POWER CORD (2)	1		
67-X24283-0E0	SPING POWER KNOB	1		
62-227680-0UA	BRACKET ABS-KINGFA 606 (UO)	1		
63-B30100-AB4G	S/T SCREW B 3 X 10 AB	2	MTG FRONT AV PCB	
63-B30100-AB4G	S/T SCREW B 3 X 10 AB	6	MTG BUTTON PCB	
63-F30080-BT3G	S/T SCREW F 3 X 8 BT (BLACK)	2		Fix bottom corners
59-425920-000	RUBBER PAD	2		
54-314740-0X0	CRT FIBRE SHEET (22MMX22MMX0.8MM)	4	MTG CRT	
54-271620-000	SPACER CRT MOUNTING T=1MM	4		
62-377180-0HA	CONECTOR	1		
T8-EDN2AY-FCNZ	FRONT CABINET ASSEMBLY	1		
55-EDN2FC-0UN1A	FRONT CABINET	1		
56-EDN2FB-1HA1A	PUSH BUTTON	1		
56-424650-0HN1A	TV/AV button	1		
56-EDN2LE-0HC5Z	LENS	1		
56-EDN2PK-0HN1A	POWER KNOB	1		
62-424680-0HN1A	LEFT DECORATE FOOT	1		
62-424690-0HN1A	RIGHT DECORATE FOOT	1		
62-424700-0HN1A	FOOT	1		
62-424710-0HN1A	FOOT	1		
62-424740-0HN1A	SP JACK LEFT	1		
62-424750-0HN1A	SP JACK RIGHT	1		

TTE Overseas Support Department

63-Z50250-AB4G	S/T SCREW 5 X 25	4	MTG CRT	
T8-EDN2AY-RCN	ASS"Y - REAR CABINET	1		
63-F30100-BT3G	S/T SCREW F 3 X 10 BT	3	MTG REAR AV	
63-B40200-AB4G	S/T SCREW B 4 X 20 AB	4	MTG FC&RC	
59-425920-000	RUBBER PAD	2		
63-F30080-BT3G	S/T SCREW F 3 X 8 BT (BLACK)	2		Fix bottom corners
T8-EDN2AY-RCNZ	REAR CABINET ASSEMBLY	1		
62-424730-0HN1A	FOOT	1		
55-EDN2RC-0UN1A	REAR CABINET	1		
62-424720-0HN1A	FOOT	1		
T8-EDN2AY-PAN	ASS"Y - PACKAGING	1		
T8-EDN2AY-PANZ	PACKAGING ASSEMBLY	1		
74-081081-80H	POLYBAG (81CMX81CM)	1		
76-426220-0AT1A	CARTON BOX	1		
74-020030-62C1A	PLASTIC BAG	1		
72-EDN2AY-E121A	OPERATION MANUAL	1		
70-DISNEY-WAR1B	WARRANTY CARD	1		
71-DISNEY-CAU1A	LABEL	1		
58-EDN2MP-JKT1A	PLATE MODLE NO.	1		
74-008022-60C	PLASTIC BAG	2		For left/right decorate foots
74-030050-50H	PLASTIC BAG 500X300MM	1		For sound box
06-015W23-A001X	REMOTE CONTROLLER RC082301/00	1		
74-008022-60C	PLASTIC BAG	1		
75-EDN1FL-CC0	POLYFOAM "FL"	1		
75-EDN1FR-CC0	POLYFOAM "FR"	1		
75-EDN1BL-CC0	POLYFOAM "BL"	1		
75-EDN1BR-CC0	POLYFOAM "BR"	1		
75-14DN2T-CC0	POLYFOAM UP	1		
57-425140-0HG	UNI-TIE	1		Put it in 74-004007-60C
74-004007-60C	PLASTIC BAG (0.05mmX45.0mmX70.0mm)	1		FOR 57-425140-0HG UNI-TIE
63-B30100-AB4G	S/T SCREW B 3 X 10 AB	1		Put it in 74-004007-60C
V8-T00M70-18M01	SOFTWARE CODE	1		FOR IC001

4.Alignment Procedure

. Summarize

M70 is a chassis based on TB1238AN and SDA55XX. In trial run, burn the **latest** software to SDA5555 which has a 128KByte flash memory. At least after the first batch production, make the mask , please take care in production. And, please note: All the soldering points in white circles must be re-soldered before the Alignment Procedure.

To solve the probable problems in production, for the workers participate in alignment, please be familiar with the Alignment Procedure.

There are 2 operation modes :User mode and D-mode. You can use the Remote control or buttons on the panel to operate in user mode, but only Remote control works in factory mode.

The way to enter D-mode : Press "CH 1/2" button on RC; use numeric buttons to select the pages of D-mode; use "CH+" and " CH-" to select the item you want to adjust, Press "VOL+" and " VOL-" to change the parameters. To quit factory mode , press "CH 1/2" button, the factory data changed will be memorized.

Some special modes :

Aging mode

— used before alignment. The aging could start after "POWER MODE" in D-mode page 8 set to 03.

Vertical stop mode

— used to confirm the VG2 voltage. Press "CC" button in D-mode to enter Vertical stop mode. Then press "CC" button again to exit.

White balance alignment mode(BUS OFF)

— used for white balance auto alignment. Press "CC" button in user mode to enter White balance alignment mode.

Factory out mode

— Before leave factory, the set must be initialized. To initialize the set, enter D-mode page 8 and select "INIT USER", then press "VOL+" to start the initialization. When the initialization finish , the set will shut off D-mode automatically. Then D-mode can not be opened by pressing "CH 1/2" button. To enter D-mode again , use remote control to set the volume to "0" then press the following buttons orderly within 2 seconds: "CH 1/2—DISPLAY—CH 1/2—DISPLAY—CH 1/2—DISPLAY".

. Alignment contents

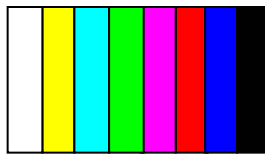
1. Mains Supply check:

Turn on TV and set volume, contrast, brightness and color to nominal, apply a RF signal modulated with a white pattern. Check the voltage across C835, it should match the below table or check the mains supply building block.

Model	CRT	Mains supply (V)
14DN2NYD	44-140FLP-IR1A	108 ± 3

2. AFT adjustment:

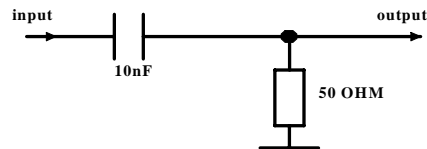
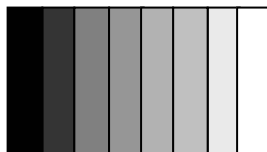
- 1) Cut off the RF signal and input a 45.75MHz (for NTSC set) color bar signal to the IF pin of tuner (pin11).



- 2) Adjust T201 until the voltage at pin 48 of IC201 is 4.62 +/- 0.2V and the color bar picture on screen keep stable.
- 3) Enter D-mode page 9 and select "SFVCO", press "VOL+" to shift the data to "01". Then Auto AFT Adjustment start and "wait" is displayed on screen. SFVCO will return to "00" and "ok" is displayed on screen when the adjustment is accomplished.
- 4) If "err" is display on screen, repeat the step 2 and 3.

3. RF AGC adjustment

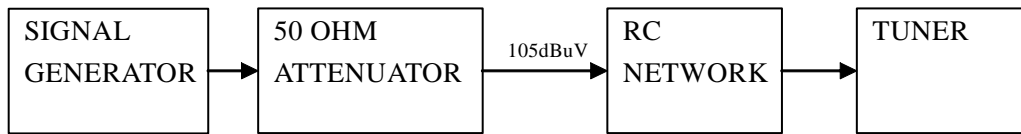
- 1) Via a 50 OHM coaxial cable terminated with a RC(50 OHM, 10 nF) network Illustrated as below, input 8-scale gray signal (100% video modulation, sound carrier off, 105dBuV/178mVrms) to the IF pin of tuner (pin11);



- 2) Detect the voltage Urf at the AGC pin of tuner (pin1);
- 3) Adjust RFAGC data in D-mode page 9, until $U_{rf}=3.3V+0.5V/-1.0V$.
- 4) Test three units according to 1) , 2) , 3) steps, and record the values of AGC in three units. Take the average value as benchmark.

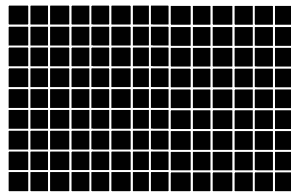
Remarks:

- 1) Comparing test is necessary due to different probe of Oscilloscope and different Test Circuit.
- 2) AGC voltage value should be tested afresh, due to the type/supplier of Tuner or Saw filter changed, or other related components changed.



4. VG2 & Focus voltage adjustment

- 1) Apply a crosshatch pattern signal in nominal status.



Enter Factory mode , press "CC" button to stop vertical scan. (Note : RCUT/GCUT/BCUT should be preset to 80 , and GDRV/BDRV to 40)

- 2) Adjust the SCREEN potentiometer (nether one) on the line output transformer to make a horizontal shining line just visible on the screen.
- 3) Turn on the vertical output, adjust the FOCUS potentiometer (upper one) on the line output transformer until the vertical lines near the screen centre are of minimum width without a visible haze.

5. White balance adjustment

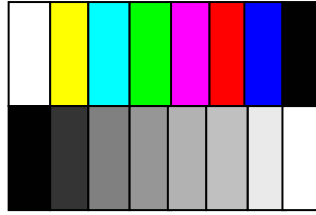
- 1) Apply a black and white pattern in nominal status;
- 2) Use a color analyzer to measure the black side of the screen. By changing the value of RCUT, GCUT and BCUT, set the reading of the color analyzer to $x=284\pm 8$, $y=299\pm 8$.
- 3) Use a color analyzer to measure the white side of the screen. By changing the value of GDRV, BDRV, set the reading of the color analyzer to $x=284\pm 8$, $y=299\pm 8$.
- 4) Separately set the brightness and contrast from min. to max., repeat the step 2 and 3 until the reading of the color analyzer is correct.

Note: Provided the production line is equipped with the auto-adjusting equipment for White balance adjustment, just use "CC" button under user mode to shut down the bus. The NVM address for White Balance Adjustment as below:

EEPROM	A0H	TB1238	88H	
R-CUT	09H		07H	8bit
G-CUT	0AH		08H	8bit
B-CUT	0BH		09H	8bit
G-DRV	0CH		0AH	7bit
B-DRV	0DH		0BH	7bit

6. Sub-brightness Adjustment

Apply a video grey scale and color bar signal in nominal status. Enter D-mode page 4, Select **BRTC** to adjust the sub-brightness, until that the 2nd dark bar of 8 level Grey scales just can be distinguished.



7. Geometry adjustment

Apply the Philips standard testing pattern signal in nominal status.



Enter D-mode page 3, adjusting the following data to get the picture have a appropriate centre, amplitude and minimal distortion.

VPOS60 (Vertical Center)

[Note: The vertical amplitude should be the same as the sample set.]

HIGH60 (Vertical Amplitude)

VLIN6 (Vertical Linearity)

VSC60 (Vertical S-Correction)

HPOS60 (Horizontal Center)

8. EHT/HEW ratio test (test with PC program)

Instruments : EHT test meter , EHT test bar(1000:1) , adjustable power supply , virtual DY(the same inductance value as CRT in production).

Input signal pattern : Black pattern

Required Data: EHT and HEW voltage when $I_b=0$;
(HEW voltage value is the DC voltage across C431).

Expected Result: EHT/HEW should match the requirements below :

Model	CRT	FBT	EHT(0uA)(KV)	HEW(0Ua)(V)	RATIO
14DN2NYD	44-140FLP-IR1A	37-SC2502-07Q01	22.5 ± 1.5	21.0 ± 1.5	$1071 \pm 3\%$

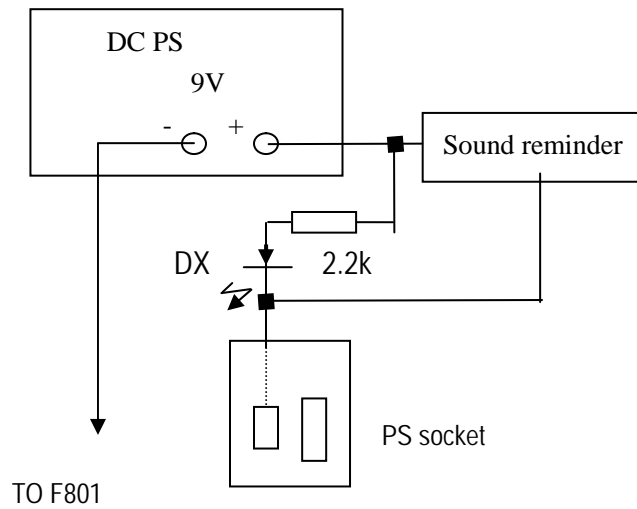
9. X-rays over protecting circuit test:

Turn on the TV and wait for the screen lighted up, then apply a 26V DC voltage across C431 , the set should enter protecting mode , or check X-ray protecting circuit.

Note: X-rays over protecting function is activated only when D-mode menu is closed.

10. Mains cord polarity test:

Connect follow the graphic below :



Plug the PS line onto the PS socket, then touch any pin of F801 with the probe, the LED DX will shine at that moment, with sound reminder, or it is disqualification.

11. Power consumption test (Random test):

Instruments : Power meter.

Input signal pattern : Color bar , Sound 1KHZ , modulation factor more than 54%.

Input signal intensity : 60dBuV (1 mVrms)

Test Method : Set the Brightness, Contrast to max, adjust the volume to get 0.5W output.

Connect the power meter to test the input power consumption. Switch the set to standby, and test the power consumption again, which should meet the requirements below :

Model	Power on	Standby
14DN2NYD	50W±5%	Less than 5W

12. EHT Range test (random test)

Instruments : High voltage meter , Ib meter.

Input signal pattern : White pattern

Input signal intensity : 60dBuV (1 Mv rms)

Test Method : Connect High voltage meter and Ib meter. Test EHT-voltage at respective Ib separately, It should meet the requirements below :

Model	EHT(KV)	Diff. in EHT at Respective Ib (KV)
	Ib=50uA	Ib = 50uA and 700uA
14DN2NYD	22.5± 1.5	< 2

TTE Overseas Support Department

13. Heater voltage test (random test)

Instruments : RMS voltage meter

Input signal : White pattern

Input signal intensity : 1mVrms (60dBuV) to 50mVrms

Connect the RMS voltage meter across CRT filament, set contrast, brightness to max, test the heater voltage and it should meet : 6.3 ± 0.3 Vrms

14. CCD and V-CHIP function test (random test)

Test V-CHIP and CCD function according to the related standard file.

15. Initialization

To initialize the set, enter D-mode page 8 and select "INIT USER", then press "VOL+" to start the initialization. When the initialization finish , the set will shut off D-mode automatically.

TTE Overseas Support Department

16.EEPROM DATA

Note :Only the items with "*" can be adjusted according to respective status; please set the other items to the same data as below before the set is initialized.

Data Model		PAGE 0								
		BACK COLOR	OSD HL	OSD HH	OSD VL	OSD VH	OSD CLKL	OSD CLKH	TXCX	RGCN
14DN2NYD		00	CA	00	15	00	48	01	30	1D
14DN1NYD		00	CA	00	15	00	48	01	30	1D

Data Model		PAGE 1				
		RCUT*	GCUT*	BCUT*	GDRV*	BDRV*
14DN2NYD		*	*	*	*	*
14DN1NYD		*	*	*	*	*

Data Model		PAGE 2				
		VPOS50	HIGH50	VLIN50	VSC50	HPOS50
14DN2NYD		*	*	*	*	*
14DN1NYD		*	*	*	*	*

Data Model		PAGE 3				
		VPOS60*	HIGH60*	VLIN60*	VSC60*	HPOS60*
14DN2NYD		*	*	*	*	*
14DN1NYD		*	*	*	*	*

Data Model		PAGE 4								
		CNTX	CNTC	CRTN	BRTX	BRTC*	BRTN*	BRTS	XVALUE	XTIME
14DN2NYD		33	1E	00	48	*	The same as BRTC	00	80	40
14DN1NYD		33	1E	00	48	*	The same as BRTC	00	80	40

Data Model		PAGE 5							
		COLX	COLC	COLN	COLS	COLP	TNTX	TNTC	TNTN
14DN2NYD		3A	45	00	40	00	3A	42	43
14DN1NYD		3A	45	00	40	00	3A	42	43

TTE Overseas Support Department

Data		PAGE 6				
Model	SHPX	SHPN	SHPTV3	SHPAV3	SHPTV4	SHPAV4
14DN2NYD	1F	20	20	20	20	20
14DN1NYD	1F	20	20	20	20	20

Data		PAGE 7			
Model	VOL01	VOL25	VOL50	VOL100	
14DN2NYD	18	62	8A	E6	
14DN1NYD	18	62	8A	E6	

Data		PAGE 8				
Model	SWITCH	THEME	TUNER	POWER MODE	INIT USER	
14DN2NYD	01	01	00	02	\	
14DN1NYD	01	00	00	02	\	

Data		PAGE 9					
Model	AFCGN	PIFVCO	RFAGC*	SFADJ	SFVCO	SCNT	IF
14DN2NYD	00	*	*	00	*	0A	01
14DN1NYD	00	*	*	00	*	0A	01

TTE Overseas Support Department

. CDRH Document

1. Testing for EHT and HEW

Model	CRT	FBT	EHT(Ib=0uA) (KV)	HEW(Ib=0uA) (V)	RATIO
14DN2NYD	44-14OFLP-IR1A	37-SC2502-07Q01	22.5 ± 1.5	21.0 ± 1.5	1071 ± 3%

2. The Value of Sample Register in X-ray protection circuit

Model	BOM	CRT	Designator	value
14DN2NYD	03-EDN2AY-US12	44-14OFLP-IR1A	R254/R255	390 /120

3. Test of X-ray protection circuit

(X-ray protection circuit will not work with nominal voltage, or it does work with over-load voltage)

Model	BOM	CRT	Designator	Nominal Voltage	over-load voltage
14DN2NYD	03-EDN2AY-US12	44-14OFLP-IR1A	C431	21.5 ± 1.5	>26V

. RE-SOLDER POINT LIST

All the soldering points in white circles must be re-soldered:

T402 (pin1, pin8, pin10)

Q402(C)

C424

C415

P401

L402

L403

D833

C835

T803 (pin1, pin3, pin6, pin7, pin12)

Q815 (D)

C806

P804

T801

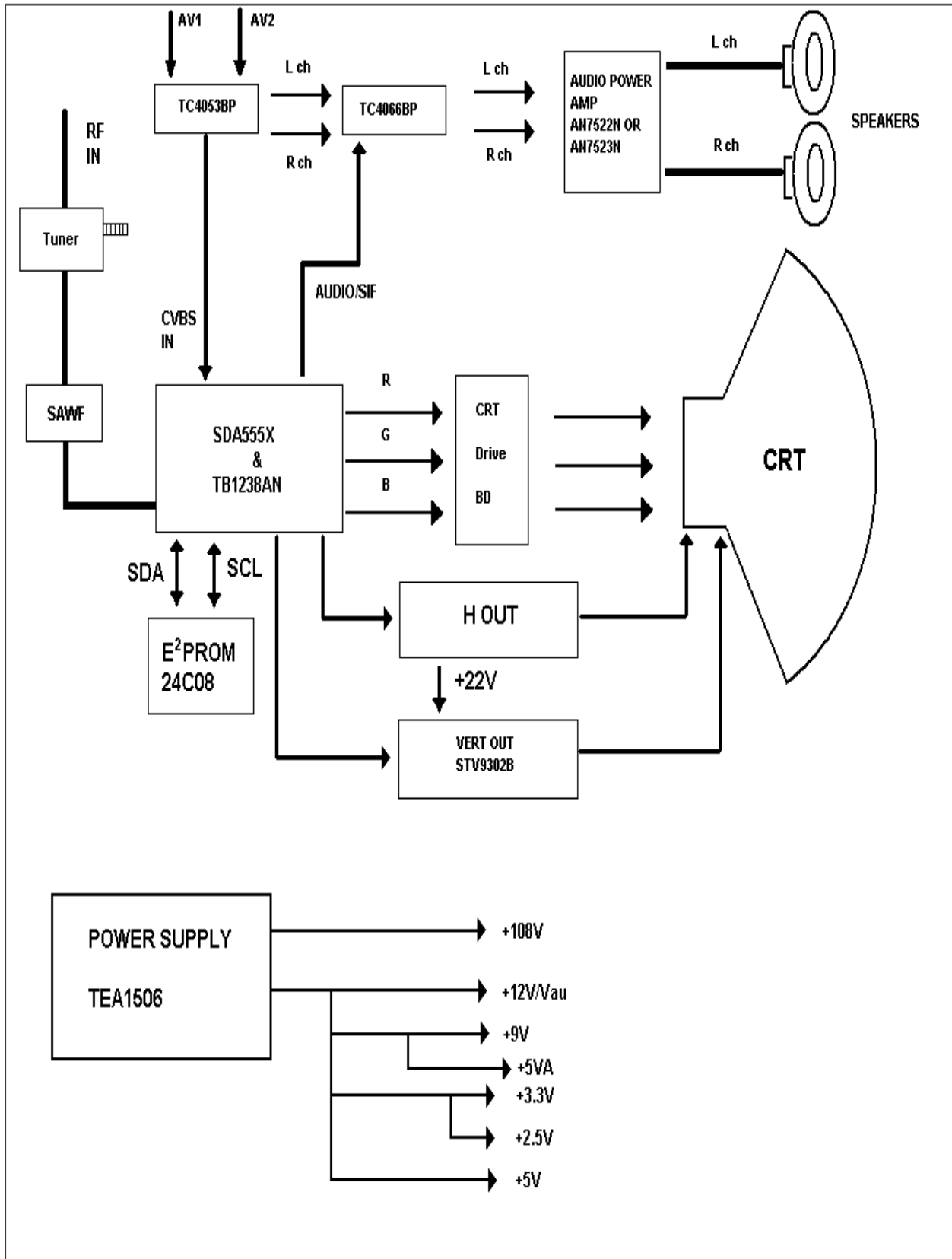
C801

P805

RT801

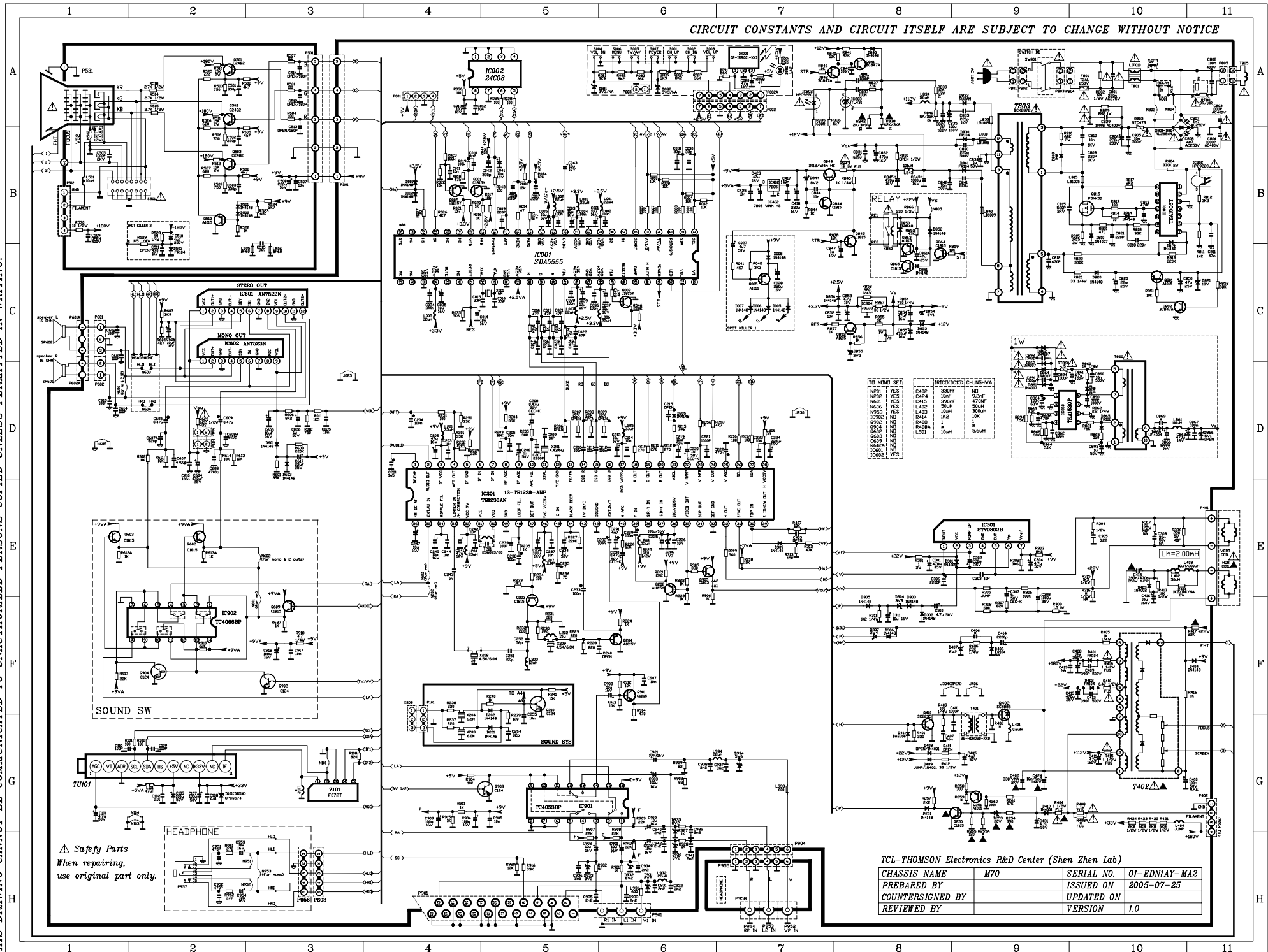
C402

5. Block Diagram



6.Schematic Diagram

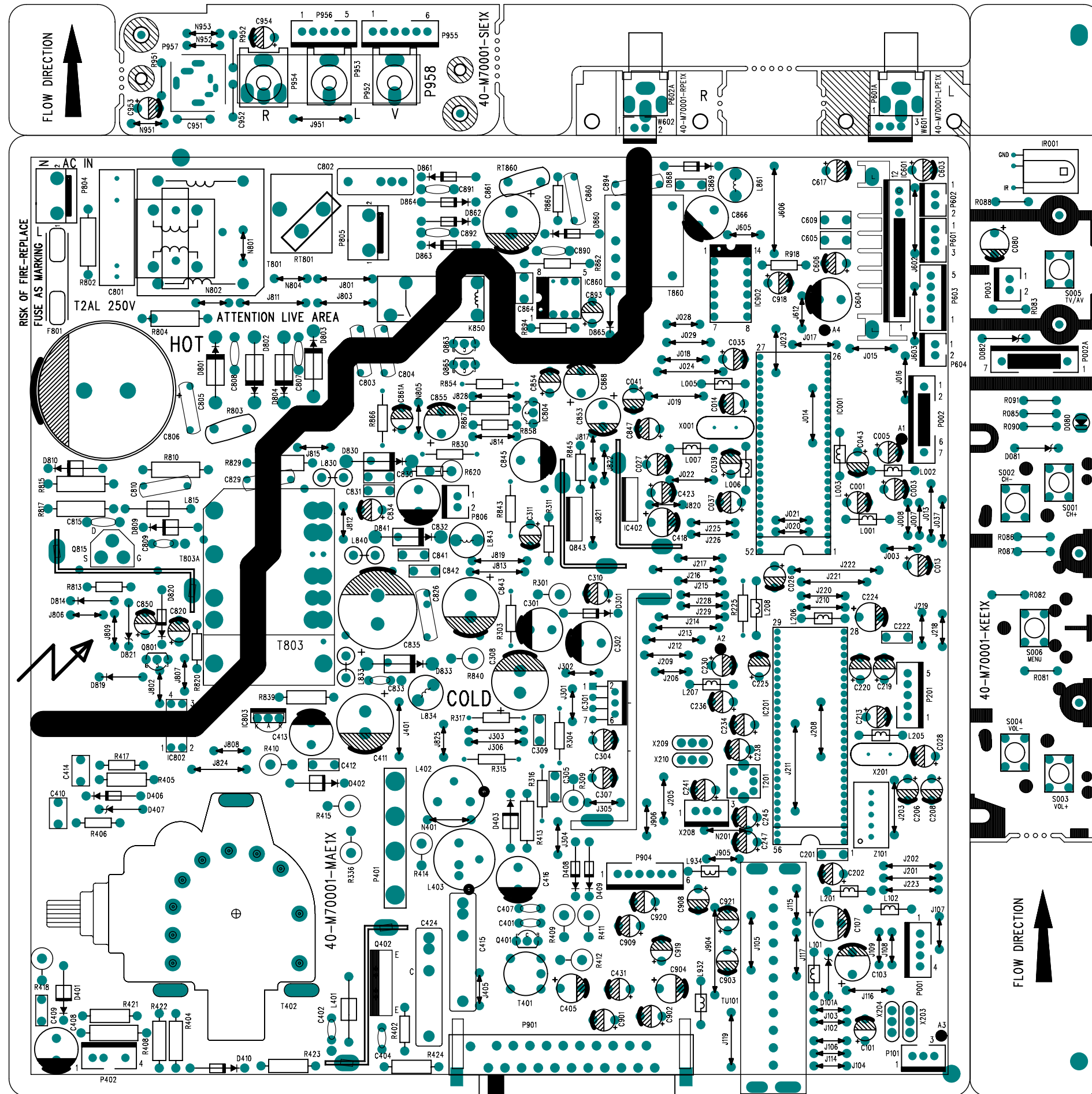
THIS DRAWING CANNOT BE COMMUNICATED TO UNAUTHORIZED PERSONS COPIED UNLESS PERMITTED IN WRITING.

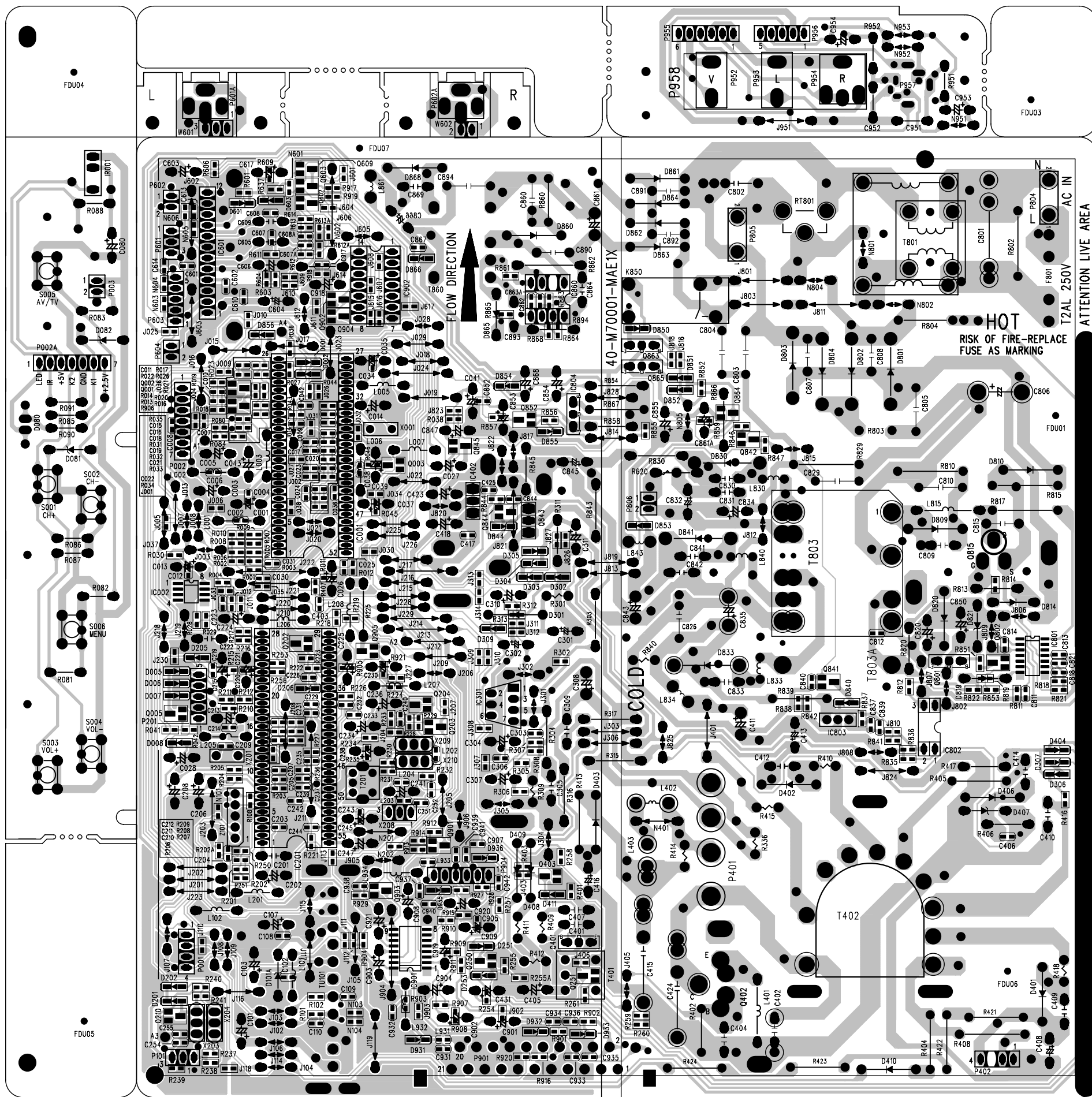


TO MIND SET

T402	YES	C466	100P
N602	YES	C424	100P
N603	YES	L403	50uH
N604	YES	L402	50uH
N605	NO	R414	1K
N606	NO	R408A	10K
N607	NO	R408B	10K
N608	NO	L501	10uH
N609	NO	R409	10K
N610	NO	R408	10K
N611	NO	R407	10K
N612	NO	R406	10K
N613	NO	R405	10K
N614	NO	R404	10K
N615	NO	R403	10K
N616	NO	R402	10K
N617	NO	R401	10K
N618	NO	R400	10K
N619	NO	R399	10K
N620	NO	R398	10K
N621	NO	R397	10K
N622	NO	R396	10K
N623	NO	R395	10K
N624	NO	R394	10K
N625	NO	R393	10K
N626	NO	R392	10K
N627	NO	R391	10K
N628	NO	R390	10K
N629	NO	R389	10K
N630	NO	R388	10K
N631	NO	R387	10K
N632	NO	R386	10K
N633	NO	R385	10K
N634	NO	R384	10K
N635	NO	R383	10K
N636	NO	R382	10K
N637	NO	R381	10K
N638	NO	R380	10K
N639	NO	R379	10K
N640	NO	R378	10K
N641	NO	R377	10K
N642	NO	R376	10K
N643	NO	R375	10K
N644	NO	R374	10K
N645	NO	R373	10K
N646	NO	R372	10K
N647	NO	R371	10K
N648	NO	R370	10K
N649	NO	R369	10K
N650	NO	R368	10K
N651	NO	R367	10K
N652	NO	R366	10K
N653	NO	R365	10K
N654	NO	R364	10K
N655	NO	R363	10K
N656	NO	R362	10K
N657	NO	R361	10K
N658	NO	R360	10K
N659	NO	R359	10K
N660	NO	R358	10K
N661	NO	R357	10K
N662	NO	R356	10K
N663	NO	R355	10K
N664	NO	R354	10K
N665	NO	R353	10K
N666	NO	R352	10K
N667	NO	R351	10K
N668	NO	R350	10K
N669	NO	R349	10K
N670	NO	R348	10K
N671	NO	R347	10K
N672	NO	R346	10K
N673	NO	R345	10K
N674	NO	R344	10K
N675	NO	R343	10K
N676	NO	R342	10K
N677	NO	R341	10K
N678	NO	R340	10K
N679	NO	R339	10K
N680	NO	R338	10K
N681	NO	R337	10K
N682	NO	R336	10K
N683	NO	R335	10K
N684	NO	R334	10K
N685	NO	R333	10K
N686	NO	R332	10K
N687	NO	R331	10K
N688	NO	R330	10K
N689	NO	R329	10K
N690	NO	R328	10K
N691	NO	R327	10K
N692	NO	R326	10K
N693	NO	R325	10K
N694	NO	R324	10K
N695	NO	R323	10K
N696	NO	R322	10K
N697	NO	R321	10K
N698	NO	R320	10K
N699	NO	R319	10K
N700	NO	R318	10K
N701	NO	R317	10K
N702	NO	R316	10K
N703	NO	R315	10K
N704	NO	R314	10K
N705	NO	R313	10K
N706	NO	R312	10K
N707	NO	R311	10K
N708	NO	R310	10K
N709	NO	R309	10K
N710	NO	R308	10K
N711	NO	R307	10K
N712	NO	R306	10K
N713	NO	R305	10K
N714	NO	R304	10K
N715	NO	R303	10K
N716	NO	R302	10K
N717	NO	R301	10K
N718	NO	R300	10K
N719	NO	R299	10K
N720	NO	R298	10K
N721	NO	R297	10K
N722	NO	R296	10K
N723	NO	R295	10K
N724	NO	R294	10K
N725	NO	R293	10K
N726	NO	R292	10K
N727	NO	R291	10K
N728	NO	R290	10K
N729	NO	R289	10K
N730	NO	R288	10K
N731	NO	R287	10K
N732	NO	R286	10K
N733	NO	R285	10K
N734	NO	R284	10K
N735	NO	R283	10K
N736	NO	R282	10K
N737	NO	R281	10K
N738	NO	R280	10K
N739	NO	R279	10K
N740	NO	R278	10K
N741	NO	R277	10K
N742	NO	R276	10K
N743	NO	R275	10K
N744	NO	R274	10K
N745	NO	R273	10K
N746	NO	R272	10K
N747	NO	R271	10K
N748	NO	R270	10K
N749	NO	R269	10K
N750	NO	R268	10K
N751	NO	R267	10K
N752	NO	R266	10K
N753	NO	R265	10K
N754	NO	R264	10K
N755	NO	R263	10K
N756	NO	R262	10K
N757	NO	R261	10K
N758	NO	R260	10K
N759	NO	R259	10K
N760	NO	R258	10K
N761	NO	R257	10K
N762	NO	R256	10K
N763	NO	R255	10K
N764	NO	R254	10K
N765	NO	R253	10K
N766	NO	R252	10K
N767	NO	R251	10K
N768	NO	R250	10K
N769	NO	R249	10K
N770	NO	R248	10K
N771	NO	R247	10K
N772	NO	R246	10K
N773	NO	R245	10K
N774	NO	R244	10K
N775	NO	R243	10K
N776	NO	R242	10K
N777	NO	R241	10K
N778	NO	R240	10K
N779	NO	R239	10K
N780	NO	R238	10K
N781	NO	R237	10K
N782	NO	R236	10K
N783	NO	R235	10K
N784	NO	R234	10K
N785	NO	R233	10K
N786	NO	R232	10K
N787	NO	R231	10K
N788	NO	R230	10K
N789	NO	R229	10K
N790	NO	R228	10K
N791	NO	R227	10K
N792	NO	R226	10K
N793	NO	R225	10K
N794	NO	R224	10K
N795	NO	R223	10K
N796	NO	R222	10K
N797	NO	R221	10K
N798	NO	R220	10K
N799	NO	R219	10K
N800	NO	R218	10K
N801	NO	R217	10K
N802	NO	R216	10K
N803	NO	R215	10K
N804	NO	R214	10K
N805	NO	R213	10K
N806	NO	R212	10K
N807	NO	R211	10K
N808	NO	R210	10K
N809	NO	R209	10K
N810	NO	R208	10K
N811	NO	R207	10K
N812	NO	R206	10K
N813	NO	R205	10K
N814	NO	R204	10K
N815	NO	R203	10K
N816	NO	R202	10K
N817	NO	R201	10K
N818	NO	R200	10K
N819	NO	R199	10K
N820	NO	R198	10K
N821	NO	R197	10K
N822	NO	R196	10K
N823	NO	R195	10K
N824	NO	R194	10K
N825	NO	R193	10K
N826	NO	R192	10K
N827	NO	R191	10K
N828	NO	R190	10K
N829	NO	R189	10K
N830	NO	R188	10K
N831	NO	R187	10K
N832	NO	R186	10K
N833	NO	R185	10K
N834	NO	R184	10K
N835	NO	R183	10K
N836	NO	R182	10K
N837	NO	R181	10K
N838	NO	R180	10K
N839	NO	R179	10K
N840	NO	R178	10K
N841	NO	R177	10K
N842	NO	R176	10K
N843	NO	R175	10K
N844	NO	R174	10K
N845	NO	R173	10K
N846	NO	R172	10K
N847	NO	R171	10K
N848	NO	R170	10K
N849	NO	R169	10K
N850	NO	R168	10K
N851	NO	R167	10K
N852	NO	R166	10K
N853	NO	R165	10K
N854	NO	R164	10K
N855	NO	R163	10K
N856	NO	R162	10K
N857	NO	R161	10K
N858	NO	R160	10K
N859	NO	R159	10K
N860	NO	R158	10K
N861	NO	R157	10K
N862	NO	R156	10K
N863	NO	R155	10K
N864	NO	R154	10K
N865	NO	R153	10K
N866	NO	R152	10K
N867	NO	R151	10K
N868	NO	R150	10K
N869	NO	R149	10K
N870	NO	R148	10K
N871	NO	R147	10K
N872	NO	R146	10K
N873	NO	R145	10K
N874	NO	R144	10K
N875	NO	R143	10K
N876	NO	R142	10K
N877	NO	R141	10K
N878	NO	R140	10K
N879	NO	R139	10K
N880	NO	R138	10K
N881	NO	R137	10K
N882	NO	R136	10K
N883	NO	R135	10K
N884	NO	R134	10K
N885	NO	R133	10K
N886	NO	R132	10K
N887	NO	R131	10K
N888	NO	R130	10K
N889	NO	R129	10K
N890	NO	R128	10K
N891	NO	R127	10K
N892	NO	R126	10K
N893	NO	R125	10K
N894	NO	R124	10K
N895	NO	R123	10K
N896	NO	R122	10K
N897	NO	R121	10K
N898	NO	R120	10K
N899	NO	R119	10K
N900	NO	R118	10K
N901	NO	R117	10K
N902	NO	R116	10K
N903	NO	R115	10K
N904	NO	R114	10K
N905	NO	R113	10K
N906	NO	R112	10K
N907	NO	R111	10K
N908	NO	R110	10K
N909	NO	R109	10K
N910	NO	R108	10K
N911	NO	R107	10K
N912	NO	R106	10K
N913	NO	R105	10K
N914	NO	R104	10K
N915	NO	R103	10K
N916	NO	R102	10K
N917	NO	R101	10K
N918	NO	R100	10K
N919	NO	R99	10K
N920	NO	R98	10K
N921	NO	R97	10K
N922	NO	R96	10K
N923	NO	R95	10K
N924	NO	R94	10K
N925	NO	R93	10K
N926	NO	R92	10K
N927	NO	R91	10K
N928	NO	R90	10K
N929	NO	R89	10K
N930	NO	R88	10K
N931	NO	R87	10K
N932	NO	R86	10K
N933	NO	R85	10K
N934	NO	R84	10K
N935	NO	R83	10K
N936	NO	R82	10K
N937	NO	R81	10K
N938	NO	R80	10K
N939	NO	R79	10K
N940	NO	R78	10K
N941	NO	R77	10K
N942	NO	R76	10K
N			

7.PCB Layout





8.Explode View Diagram

